


# Welcome

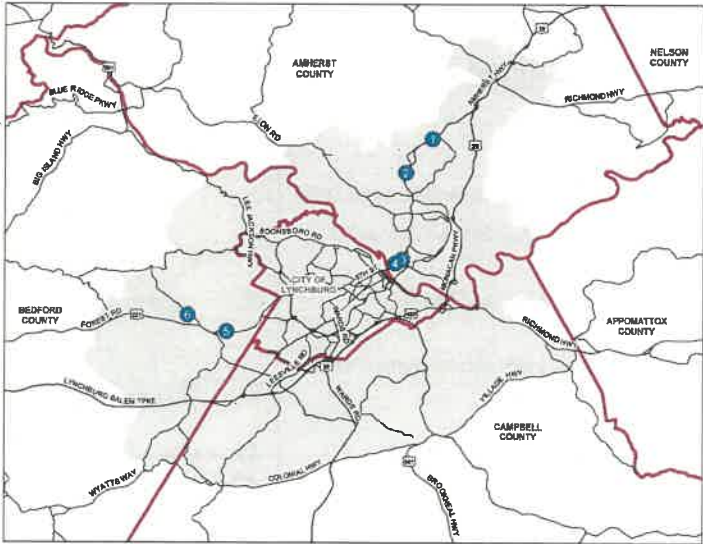
CVTPO  
INTERSECTION SAFETY  
STUDY  
STEERING WORK GROUP  
OCTOBER 31, 2023



1

# Agenda

- Introductions
- Project Scope and Purpose
- Study Intersections
- Data and Analysis to Date
- Information Needed
- Next Steps/Schedule



CVTPO INTERSECTION SAFETY STUDY

2



# Project Scope and Purpose

VDOT funded project, administered by the CVTPO

Intersections identified by localities

Safety improvements and traffic conditions (2023 and 2045) to be evaluated

CVTPO INTERSECTION SAFETY STUDY

3

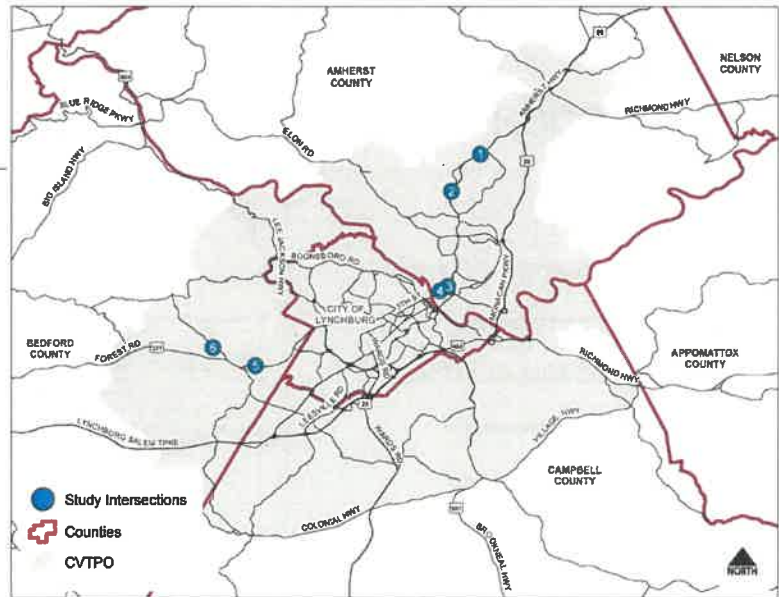
# Study Intersections

## Amherst County

1. Amherst Highway (BUS 29) and Sprouse Drive
2. Amherst Highway (BUS 29) and Rothwood Road (657)
3. Amherst Highway (163) and Old Town Connector (210)
4. Amherst Highway (163) and Merrymoor Drive (1059)

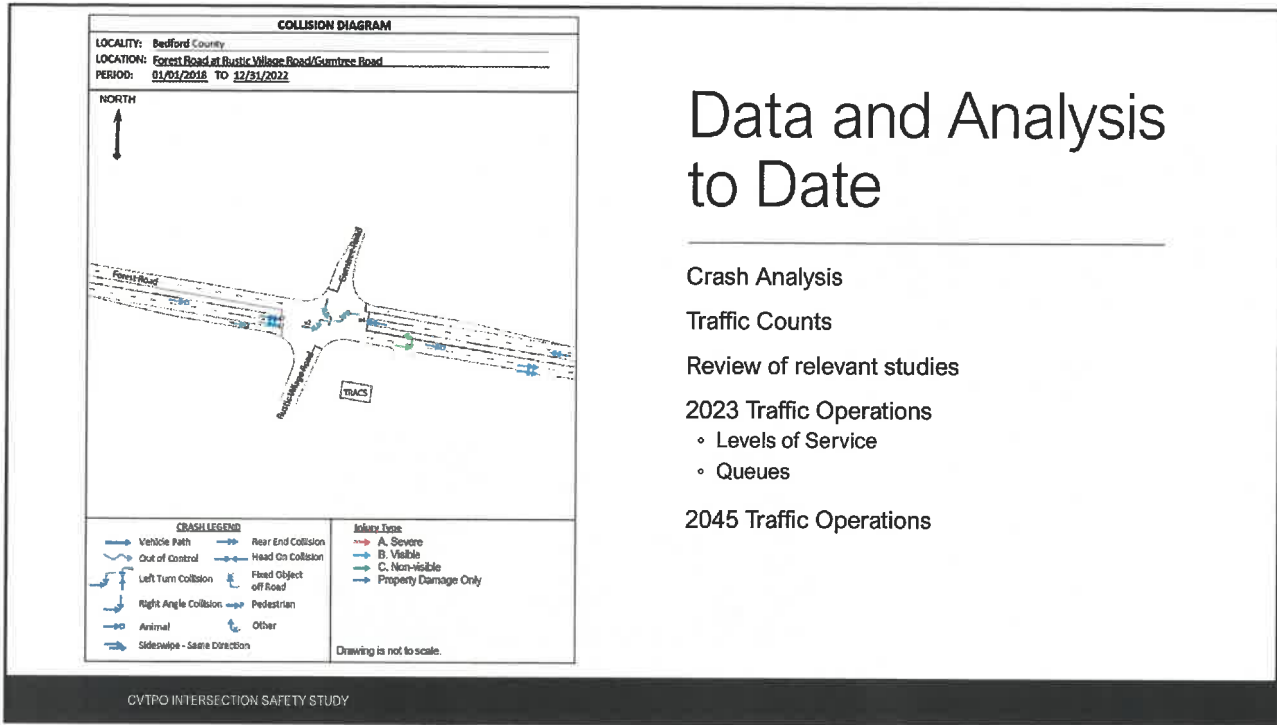
## Bedford County

5. Forest Road (221) and Rustic Village Road/Gumtree Road (609)
6. Perrowville Road (663) and Mays Mill Road (622)

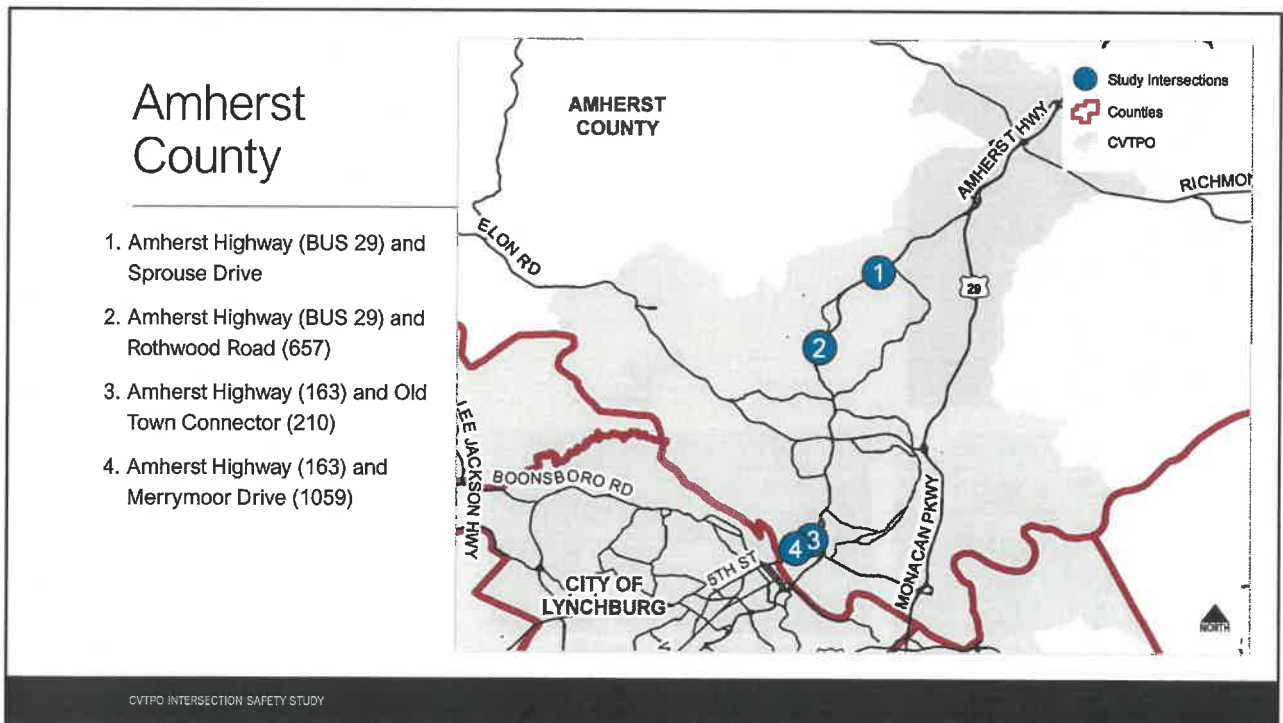


CVTPO INTERSECTION SAFETY STUDY

4

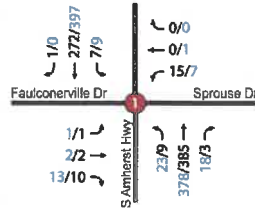
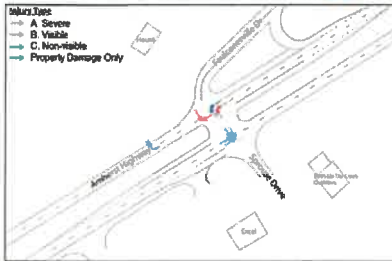


5



6

### Amherst Highway (BUS 29) and Sprouse Drive



**Concerns**

- Angle collisions
- No pavement markings in median
- No stop bars

**Other Studies or Projects?**



Southbound approaching Sprouse Drive

CVTPO INTERSECTION SAFETY STUDY

7

### Amherst Highway (BUS 29) and Rothwood Road (657)



**Concerns**

- Angle collisions
- Sight distance
  - Looking north from Francis Avenue approximately 550 feet
  - Looking north from median approximately 520 feet
  - Stopping sight distance 495 feet
  - Intersection sight distance 650 feet
  - Looking south from Rothwood Road must pull all the way up
- Minimal pavement markings in median
- No stop bars

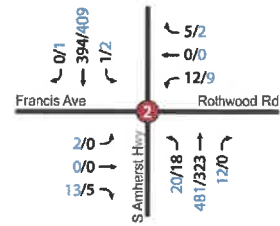
**Other Studies or Projects?**



Looking north at southbound lanes from median



Southbound approaching Rothwood Road

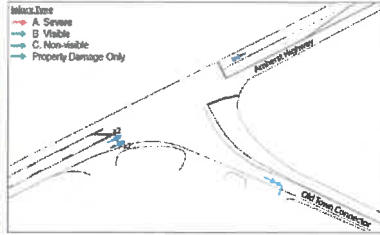


Peak Hour Volumes  
 AM (7:15-8:15) / PM (4:45-5:45)

CVTPO INTERSECTION SAFETY STUDY

8

### Amherst Highway (163) and Old Town Connector (210)



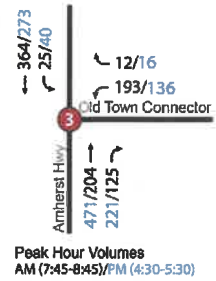
- Questions/Concerns**
- Signal warning sign placement?
  - Significant truck traffic
- Other Studies or Projects?**



Westbound approaching Amherst Highway



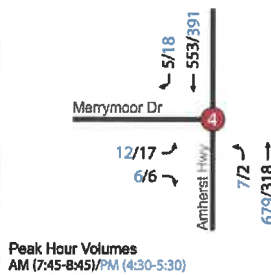
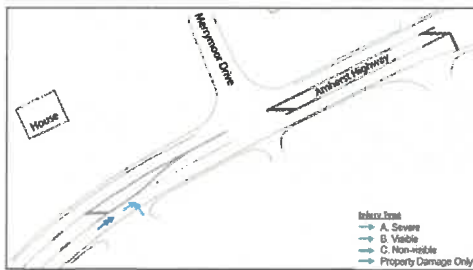
Southbound approaching Old Town Connector



CVTPO INTERSECTION SAFETY STUDY

9

### Amherst Highway (163) and Merrymoor Drive (1059)



- Questions/Concerns**
- Background – locality concern?
  - No stop bar
  - Old Town Connector queues extend through intersection PM peak

**Other Studies or Projects?**



Northbound approaching Merrymoor Drive



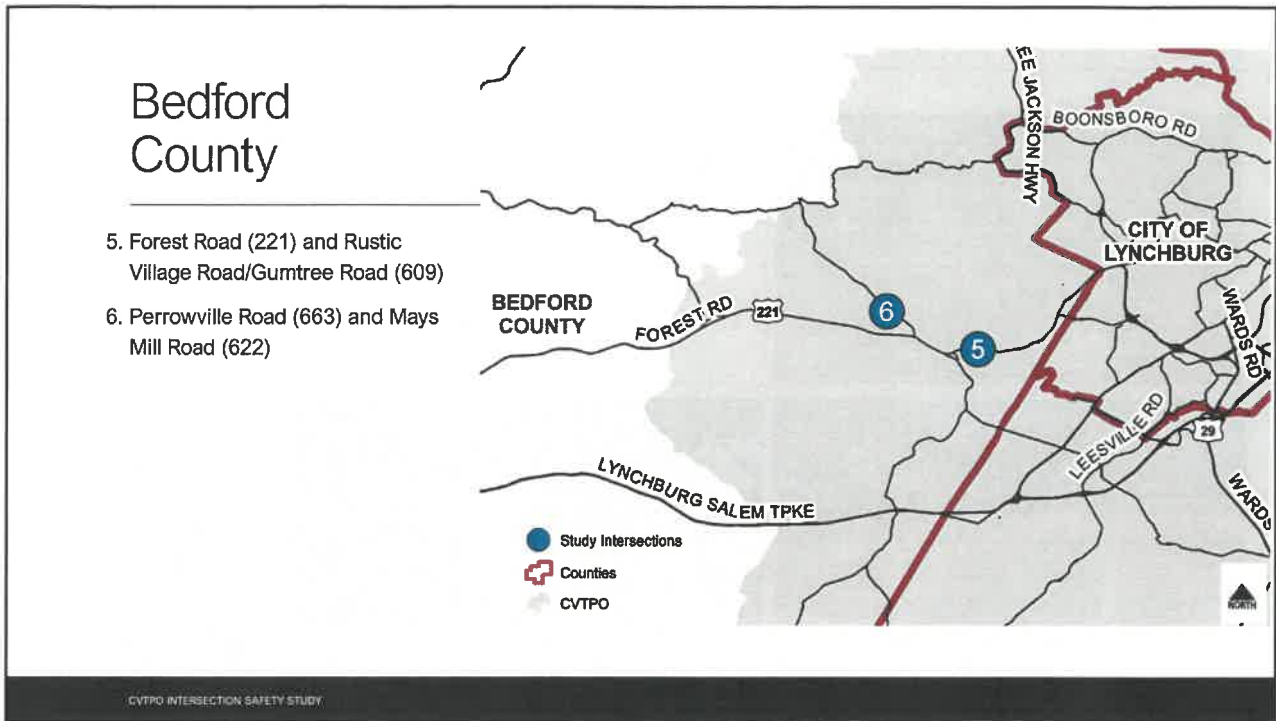
Eastbound approaching Amherst Highway



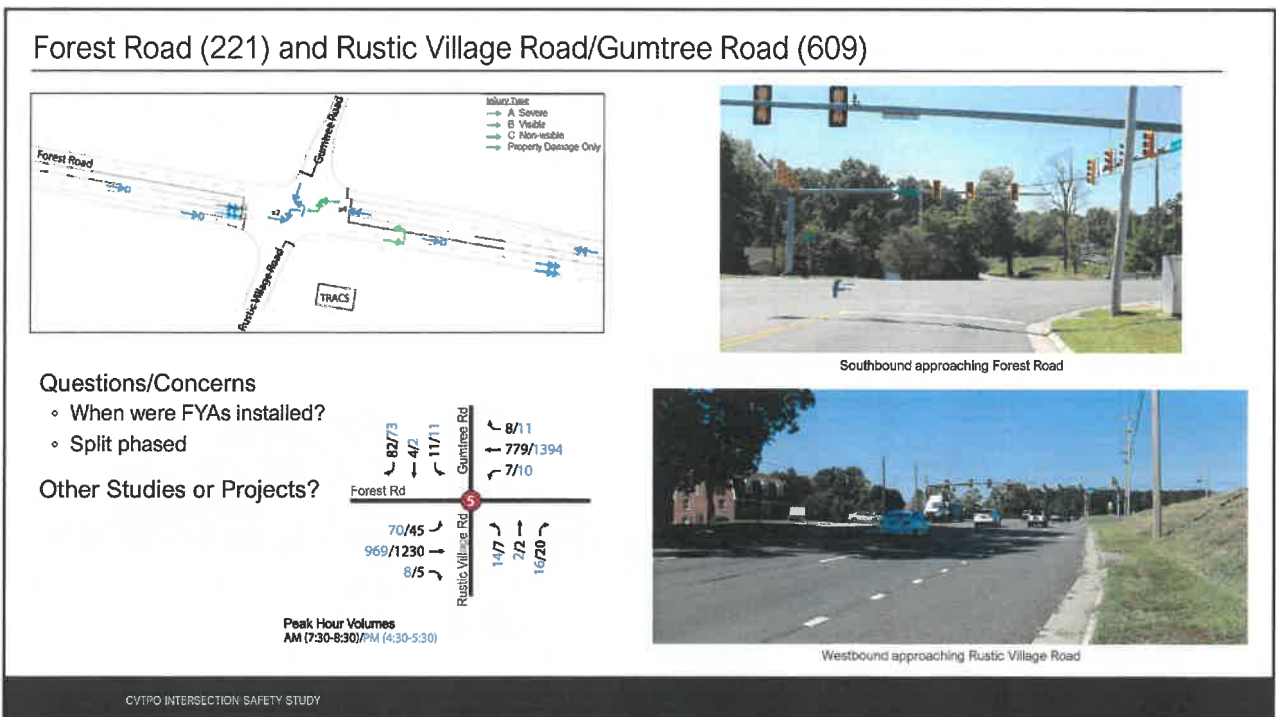
Northbound approaching Old Town Connector

CVTPO INTERSECTION SAFETY STUDY

10



11



12

## Perrowville Road (663) and Mays Mill Road (622)



Northbound approaching Perrowville Road

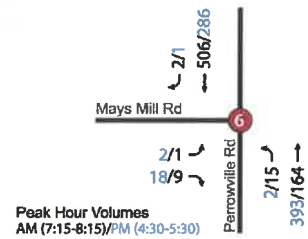


Westbound approaching Mays Mill Road

### Questions/Concerns

- Background?
- No crashes in last 5 years

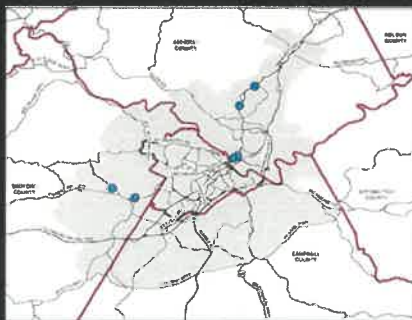
### Other Studies or Projects?



CVTPO INTERSECTION SAFETY STUDY

13

## Next Steps and Schedule



### Identify and Analyze Mitigation Measures

#### Present Improvement Concepts to SWG: Late November

- Look for Doodle Poll

#### Revise concepts as needed

#### Present Final Concepts to SWG: Early February

#### Present Concepts to Amherst and Bedford County Boards of Supervisors if requested

#### Prepare Final Report

CVTPO INTERSECTION SAFETY STUDY

14

# Discussion

---

CVTPO INTERSECTION SAFETY STUDY