

Federal Disadvantaged Community Evaluation Tools & CVPDC Area Eligibility Data

As a component of the Inflation Reduction Act, Bipartisan Infrastructure Law and the American Rescue Plan the Federal Government has made a commitment, called **Justice40 Initiative**, to invest 40% of overall funding in certain investments to communities that traditionally seen underinvestment or disadvantaged communities.

A number of Federal Agency tools have been developed to assist in evaluating if an area, based on Justice40 Initiative, is considered a Disadvantaged community. This document provides information on a few of the tools and detailed information for CVPDC areas.

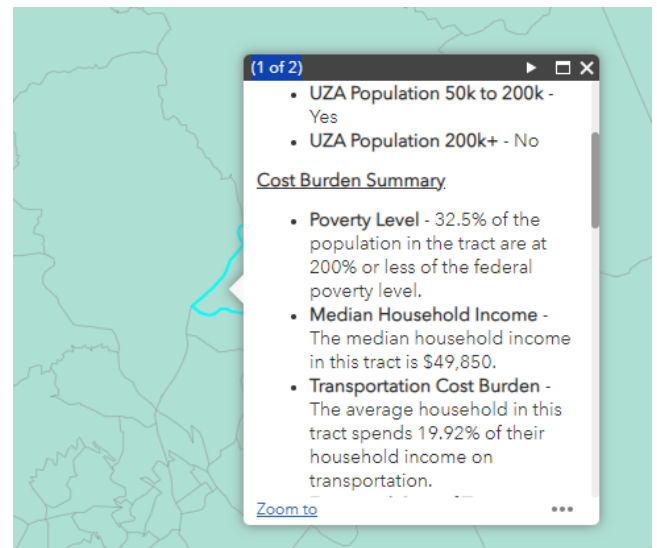
1) US DOT Equitable Transportation Community (ETC) Explorer

Info:

<https://www.transportation.gov/grants/dot-navigator/usdot-equitable-transportation-community-etc-explorer-user-guide>

Tool: <https://experience.arcgis.com/experience/0920984aa80a4362b8778d779b090723/page/Homepage/>

- Interactive web tool using 2020 census tract data to present cumulative burdened communities as result of transportation underinvestment in five areas:
 - transportation insecurity
 - environmental burden
 - social vulnerability
 - climate and disaster risk burden
 - health vulnerability
- This tool meant to complement the CEJEST Tool (#2).
- Information available at compare local information on National and State comparable tracts across five disadvantaged components and forty indicators.
- Includes Transportation Insecurity Analysis Tool
Provides detailed demographic, economic, transportation burdened details for determined evaluation area.
- Quick, valuable tool for detailed EJ factors in grant/program applications.



Attachments 1 & 2 presents the CVPDC State and National ETC Explorer areas respectively. The ETC folder provides the corresponding ETC Explorer tool data.

2) Climate & Economic Justice Screen Tool (CEJEST)

<https://screeningtool.geoplatform.gov/en/#3/33.47/-97.5>

- Developed by the Council on Environmental Quality (CEQ) to develop a tool that uses data sets as indicators in eight categories: climate change, energy, health, housing, legacy pollution, transportation, water and wastewater, and workforce development, to identify communities with burdens in these areas.
- The tool can be used to help identify disadvantaged communities who may benefit from Justice\$) Initiative programs where benefit investment is related to climate, clean energy, and related areas of disadvantaged communities.
- A mapping and data tool, at the census tract level, that highlights tracts that are overburdened or underserved are presented as disadvantaged.
- The tool ranks most burdens as percentiles, comparing tracts to other areas. The tool uses thresholds to determine disadvantaged status. The methodology and description of the eight rated categories is here: <https://screeningtool.geoplatform.gov/en/methodology>.

Attachment 3 presents the CVPDC area results from the CEJEST Tool. The full CEJEST information is provided in the CEJEST folder.

3) Areas of Persistent Poverty – RAISE Persistent Poverty Tool

<https://maps.dot.gov/BTS/GrantProjectLocationVerification/>

<https://www.transportation.gov/RAISEgrants/raise-app-hdc>

- A mapping tool that presents the areas that are defined as an “Area of Persistent Poverty” per the Bipartisan Infrastructure Law definition.
- The tool allows users to define the project area, down to census tract. USDOT also has a published table to aid in identifying the persistent poverty areas.
- It is important to return to this site for mapping/data updates as the tool is updated according to updated data.

Attachment 4 provides the current CVPDC Areas of Persistent Poverty, per the RAISE tool.

NOTE: It was this tool that was used and included in the successful U.S. DOT Safe Streets and Roads for All (SS4A) Planning Grant \$270,000 award.

4) EJScreen: Environmental Justice Screening and Mapping Tool

<https://www.epa.gov/ejscreen/what-ejscreen>

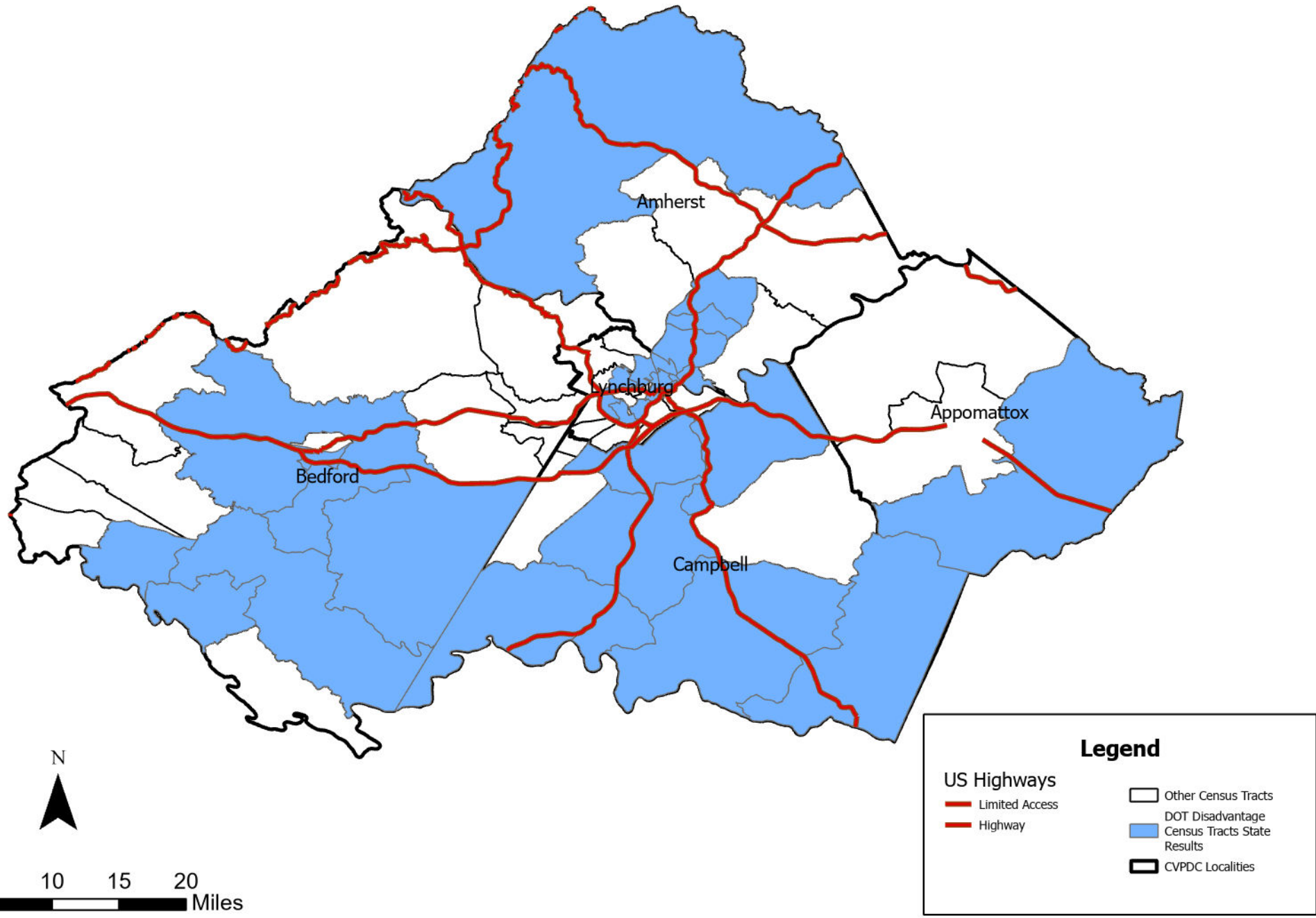
- EJScreen is a mapping and screening tool that combines/provides general environmental and demographic indicators in map and report format. Developed for EPA the tool provides preliminary data in considering an areas likelihood for disadvantaged eligibility; serves a quick first review tool.

- EJScreen is not used to identify or label an area as an “EJ community”. Rather the tool – map and general data – serve as a starting point for disadvantaged community status. Thus, EJScreen data will not serve as the sole source for federal disadvantaged community eligibility.
- There are data limitations from EJScreen and use considerations that should be considered: Learn more here about the [Purpose and Use of EJScreen](#) and [Limitations and Caveats](#).

Attachment 5 presents the EJScreen Community Profile information for the Lynchburg MSA area. The EJScreen folder includes a Community Report for Lynchburg, and Amherst, Appomattox, Bedford and Campbell counties.

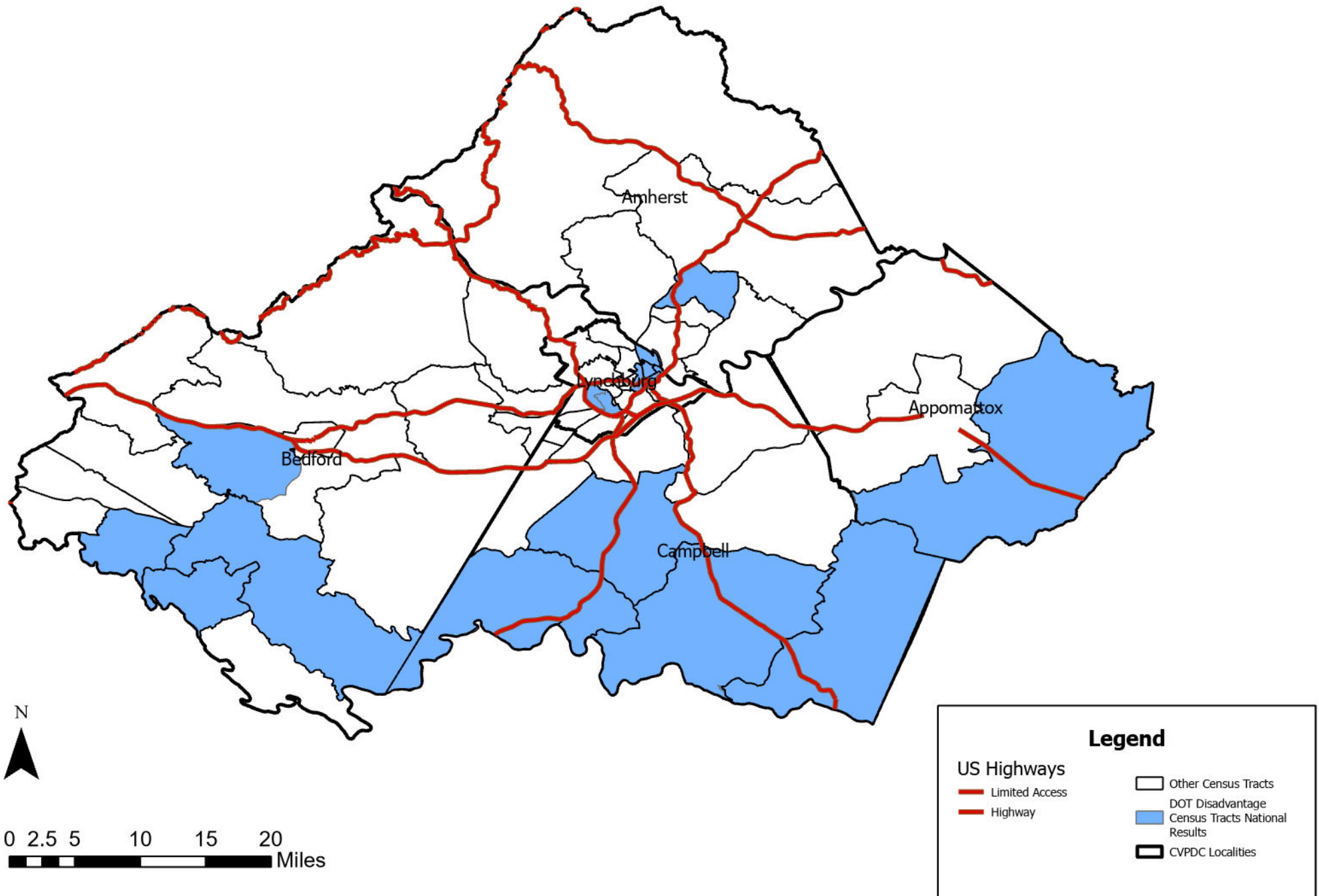
CVPDC Disadvantaged Census Tracts

USDOT Equitable Transportation Community (ETC) Explorer - State Results



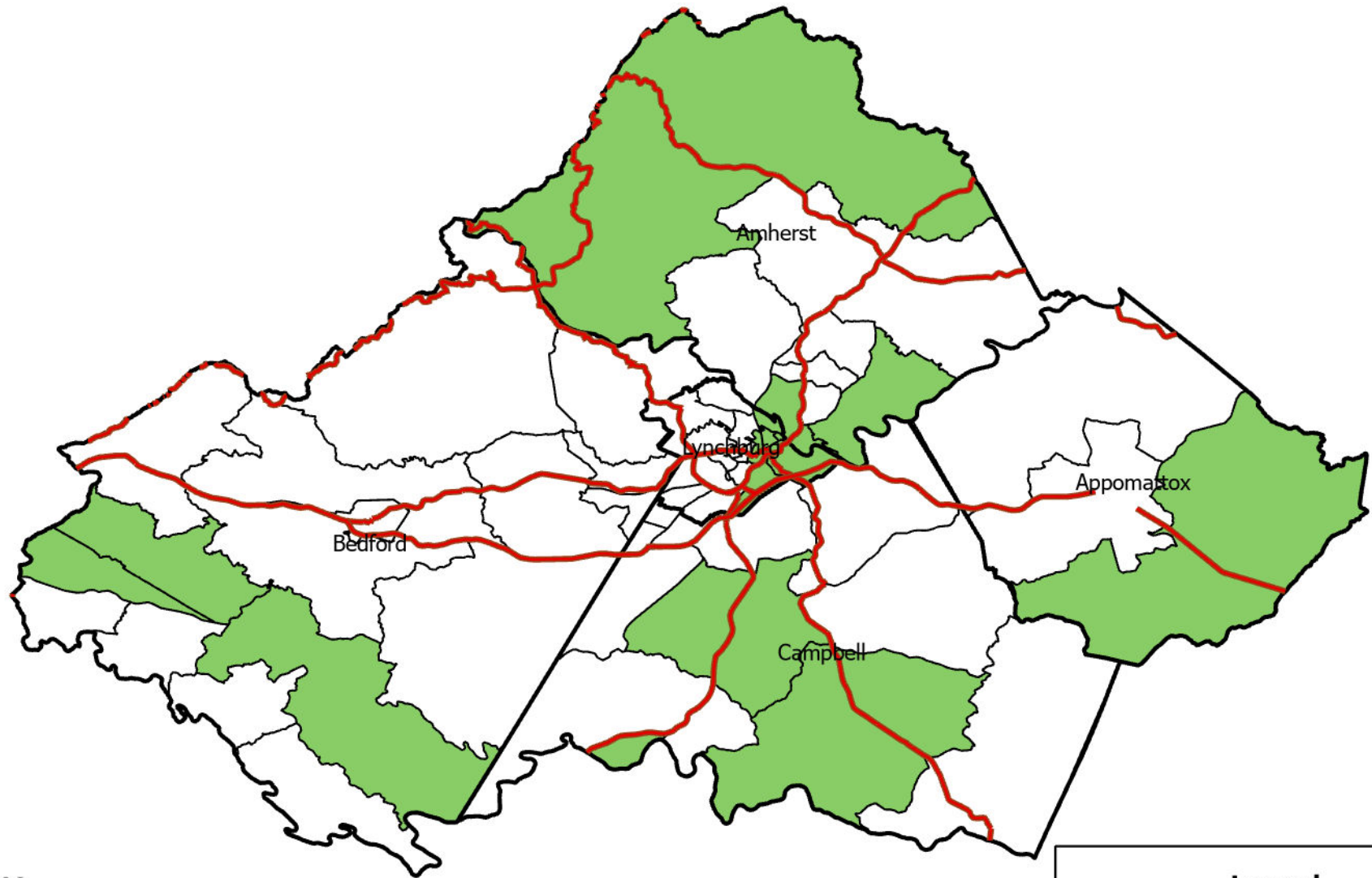
CVPDC Disadvantaged Census Tracts

USDOT Equitable Transportation Community (ETC) Explorer - National Results









CVPDC Disadvantaged Census Tracts

Climate and Economic Justice Screening Tool (CEJST)

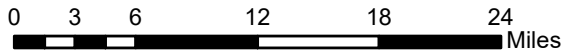
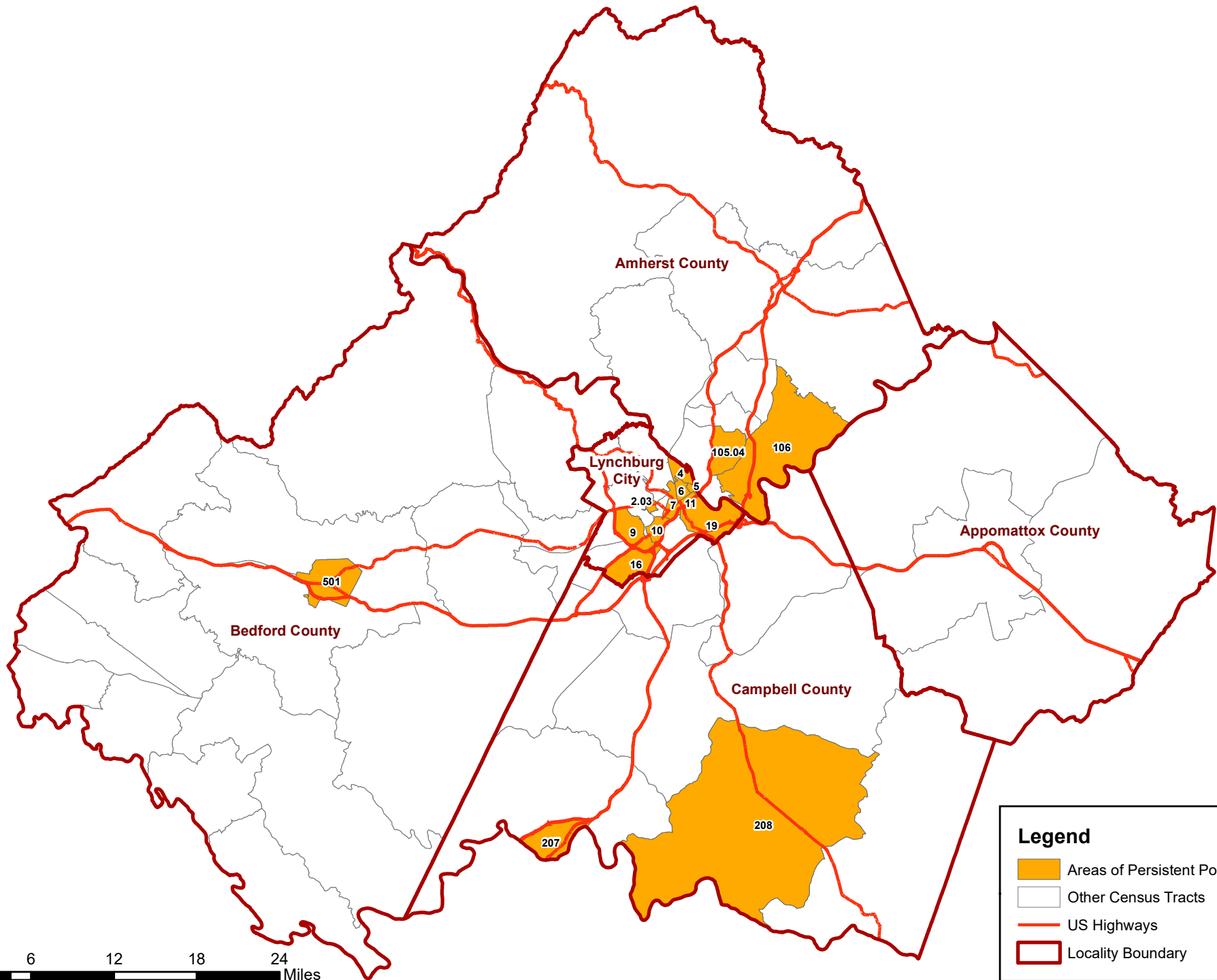


0 2.5 5 10 15 20 Miles

Legend

 US Highways	 CVPDC Localities
 Limited Access	 Other Census Tracts
 Highway	 Census Tracts Identified as Disadvantaged by CEJST

Central Virginia PDC Areas of Persistent Poverty Census Tracts



Legend

- Areas of Persistent Poverty Tracts
- Other Census Tracts
- US Highways
- Locality Boundary

Central Virginia PDC Areas of Persistent Poverty (APP) Census Tracts
(Source: U.S. Census' Geocoder Tool)

State	Locality	C. Census Tract	Area of Persistent Poverty	Historically Disadvantaged	Transportation Disadvantage	Health Disadvantage	Economy Disadvantage	Equity Disadvantage	Resilience Disadvantage	Environmental Disadvantage
VA	Lynchburg city	Census Tract 10	3,405	0	0	0	1	0	0	1
VA	Lynchburg city	Census Tract 11	1,981	0	0	1	1	0	0	1
VA	Lynchburg city	Census Tract 16	8,608	0	1	0	1	0	0	0
VA	Lynchburg city	Census Tract 19	4,748	0	0	1	1	0	0	0
VA	Lynchburg city	Census Tract 2.03	2,106	0	0	0	1	0	0	0
VA	Lynchburg city	Census Tract 4	2,959	0	0	1	1	0	0	0
VA	Lynchburg city	Census Tract 5	597	0	0	1	1	0	0	0
VA	Lynchburg city	Census Tract 6	3,552	0	0	1	1	0	0	0
VA	Lynchburg city	Census Tract 7	3,689	0	0	1	1	0	0	0
VA	Lynchburg city	Census Tract 9	7,135	0	0	1	1	1	0	0
VA	Amherst County	Census Tract 105.04	4,029	0	0	1	1	0	0	0
VA	Amherst County	Census Tract 106	3,298	0	1	1	1	0	0	0
VA	Bedford County	Census Tract 501	6,449	0	1	1	1	0	0	0
VA	Campbell County	Census Tract 207	3,442	0	1	1	1	0	0	0
VA	Campbell County	Census Tract 208	3,229	0	1	1	1	0	0	0
TOTAL APP Population			59,227							

EJScreen Community Report

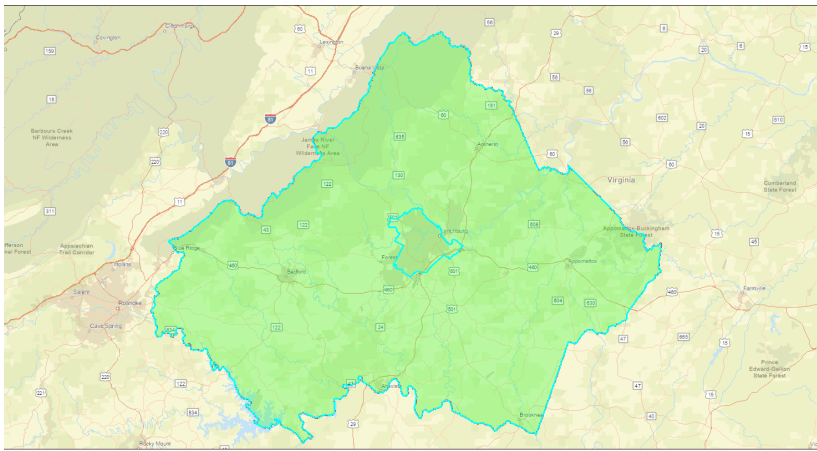
This report provides environmental and socioeconomic information for user-defined areas, and combines that data into environmental justice and supplemental indexes.

County: Bedford, Campbell, Appomattox, Amherst, Lynchburg city

Lynchburg city, VA

Population: 261,232

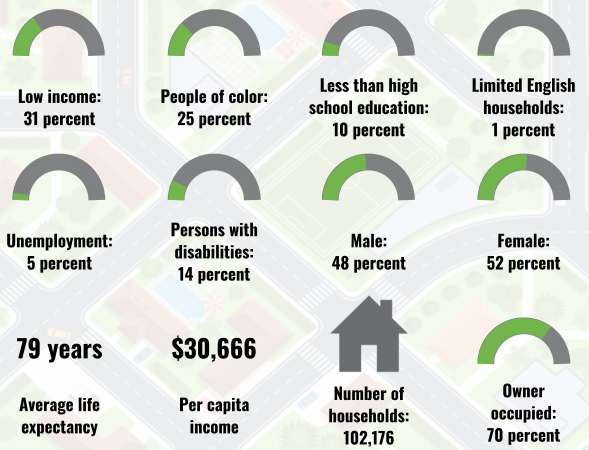
Area in square miles: 2146.90



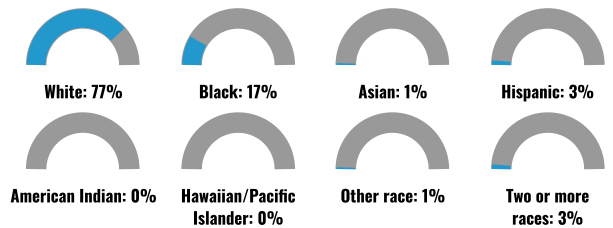
Jul 10, 2023
Lynchburg MSA

1:577,791
0 5 10 20 mi
0 5 10 20 km
USGS, Esri, HERE, Garmin, SwireData, FAO, METUNASA, USGS, EPA, NPS

COMMUNITY INFORMATION



BREAKDOWN BY RACE



BREAKDOWN BY AGE



LIMITED ENGLISH SPEAKING BREAKDOWN



LANGUAGES SPOKEN AT HOME

LANGUAGE	PERCENT
English	95%
Spanish	2%
Other Indo-European	1%
Total Non-English	5%

Notes: Numbers may not sum to totals due to rounding. Hispanic population can be of any race. Source: U.S. Census Bureau, American Community Survey (ACS) 2017-2021. Life expectancy data comes from the Centers for Disease Control.

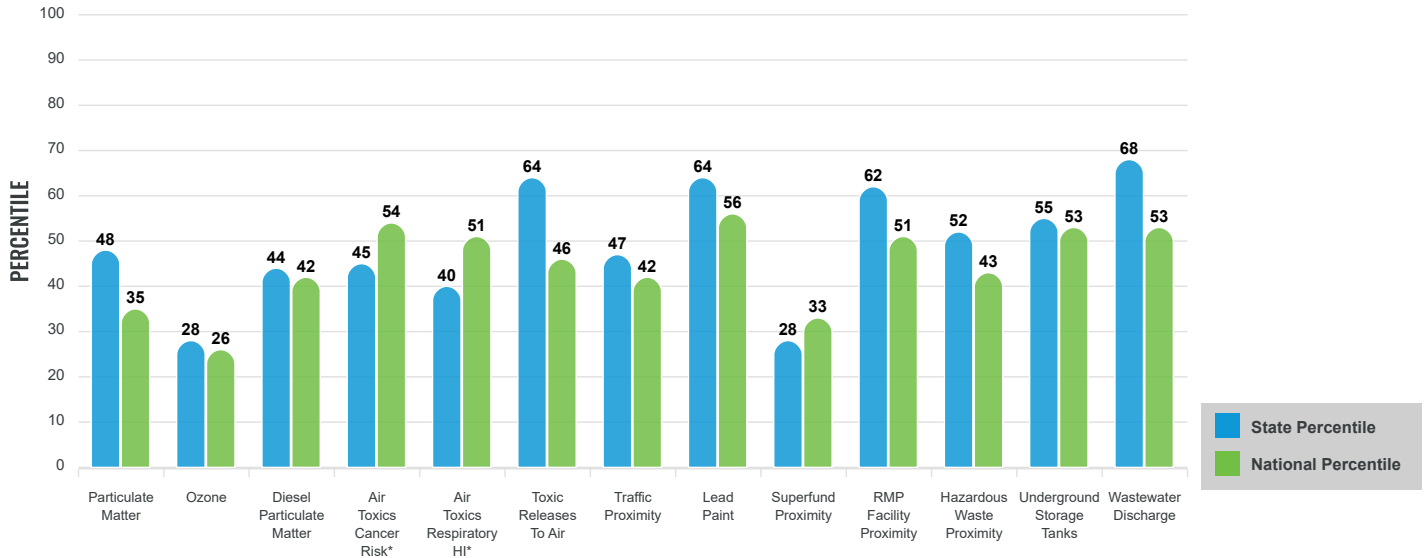
Environmental Justice & Supplemental Indexes

The environmental justice and supplemental indexes are a combination of environmental and socioeconomic information. There are thirteen EJ indexes and supplemental indexes in EJScreen reflecting the 13 environmental indicators. The indexes for a selected area are compared to those for all other locations in the state or nation. For more information and calculation details on the EJ and supplemental indexes, please visit the [EJScreen website](#).

EJ INDEXES

The EJ indexes help users screen for potential EJ concerns. To do this, the EJ index combines data on low income and people of color populations with a single environmental indicator.

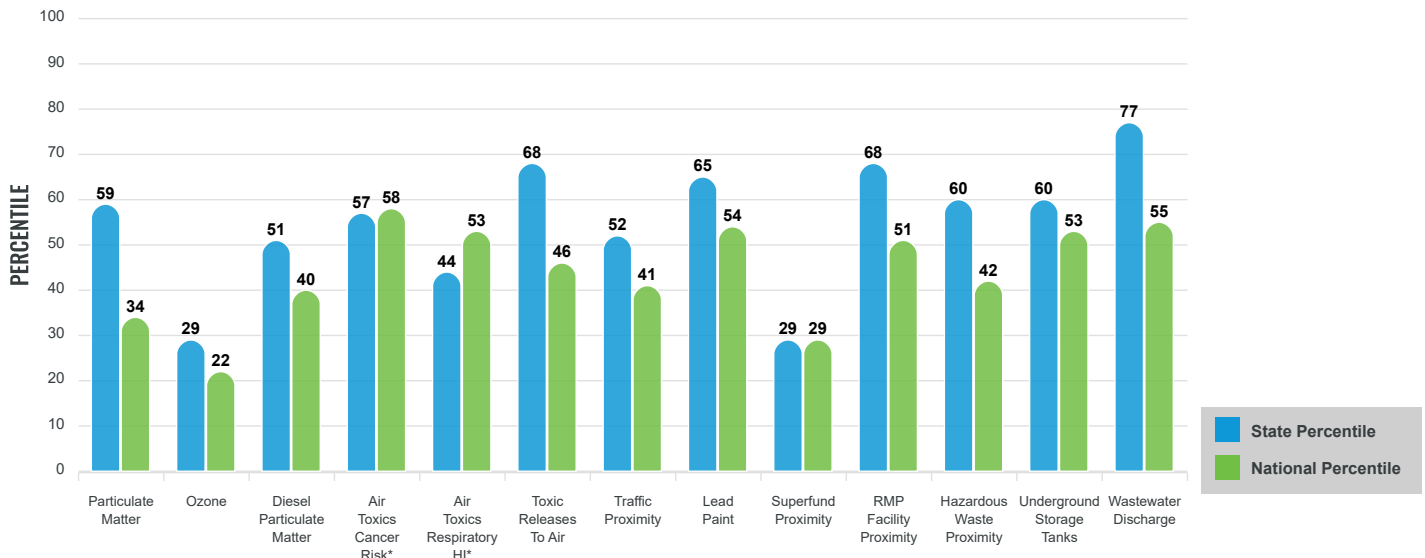
EJ INDEXES FOR THE SELECTED LOCATION



SUPPLEMENTAL INDEXES

The supplemental indexes offer a different perspective on community-level vulnerability. They combine data on percent low-income, percent linguistically isolated, percent less than high school education, percent unemployed, and low life expectancy with a single environmental indicator.

SUPPLEMENTAL INDEXES FOR THE SELECTED LOCATION



These percentiles provide perspective on how the selected block group or buffer area compares to the entire state or nation.

Report for County: Bedford, Campbell, Appomattox, Amherst, Lynchburg city

EJScreen Environmental and Socioeconomic Indicators Data

SELECTED VARIABLES	VALUE	STATE AVERAGE	PERCENTILE IN STATE	USA AVERAGE	PERCENTILE IN USA
POLLUTION AND SOURCES					
Particulate Matter ($\mu\text{g}/\text{m}^3$)	7.27	7.53	44	8.08	26
Ozone (ppb)	57	59.1	20	61.6	18
Diesel Particulate Matter ($\mu\text{g}/\text{m}^3$)	0.143	0.209	30	0.261	29
Air Toxics Cancer Risk* (lifetime risk per million)	29	31	0	28	3
Air Toxics Respiratory HI*	0.3	0.33	0	0.31	4
Toxic Releases to Air	350	4,300	63	4,600	40
Traffic Proximity (daily traffic count/distance to road)	47	150	44	210	39
Lead Paint (% Pre-1960 Housing)	0.24	0.22	63	0.3	52
Superfund Proximity (site count/km distance)	0.026	0.11	20	0.13	24
RMP Facility Proximity (facility count/km distance)	0.2	0.21	75	0.43	57
Hazardous Waste Proximity (facility count/km distance)	0.28	0.61	60	1.9	42
Underground Storage Tanks (count/km ²)	1.1	1.9	52	3.9	48
Wastewater Discharge (toxicity-weighted concentration/m distance)	0.022	7.2	90	22	73
SOCIOECONOMIC INDICATORS					
Demographic Index	28%	31%	49	35%	47
Supplemental Demographic Index	13%	12%	62	14%	53
People of Color	25%	38%	38	39%	44
Low Income	31%	25%	66	31%	56
Unemployment Rate	5%	5%	62	6%	55
Limited English Speaking Households	1%	2%	65	5%	58
Less Than High School Education	10%	10%	61	12%	57
Under Age 5	5%	6%	54	6%	54
Over Age 64	19%	17%	63	17%	63
Low Life Expectancy	19%	20%	43	20%	44

*Diesel particulate matter, air toxics cancer risk, and air toxics respiratory hazard index are from the EPA's Air Toxics Data Update, which is the Agency's ongoing, comprehensive evaluation of air toxics in the United States. This effort aims to prioritize air toxics, emission sources, and locations of interest for further study. It is important to remember that the air toxics data presented here provide broad estimates of health risks over geographic areas of the country, not definitive risks to specific individuals or locations. Cancer risks and hazard indices from the Air Toxics Data Update are reported to one significant figure and any additional significant figures here are due to rounding. More information on the Air Toxics Data Update can be found at: <https://www.epa.gov/haps/air-toxics-data-update>.

Sites reporting to EPA within defined area:

Superfund	0
Hazardous Waste, Treatment, Storage, and Disposal Facilities	9
Water Dischargers	243
Air Pollution	383
Brownfields	31
Toxic Release Inventory	73

Other community features within defined area:

Schools	73
Hospitals	7
Places of Worship	433

Other environmental data:

Air Non-attainment	No
Impaired Waters	Yes

Selected location contains American Indian Reservation Lands*	No
Selected location contains a "Justice40 (CEJST)" disadvantaged community	Yes
Selected location contains an EPA IRA disadvantaged community	Yes

Report for County: Bedford, Campbell, Appomattox, Amherst, Lynchburg city

EJScreen Environmental and Socioeconomic Indicators Data

HEALTH INDICATORS

INDICATOR	HEALTH VALUE	STATE AVERAGE	STATE PERCENTILE	US AVERAGE	US PERCENTILE
Low Life Expectancy	19%	20%	43	20%	44
Heart Disease	6.4	5.5	65	6.1	56
Asthma	10	9.6	66	10	55
Cancer	6.8	6.1	62	6.1	64
Persons with Disabilities	13.6%	12.6%	60	13.4%	57

CLIMATE INDICATORS

INDICATOR	HEALTH VALUE	STATE AVERAGE	STATE PERCENTILE	US AVERAGE	US PERCENTILE
Flood Risk	6%	9%	54	12%	47
Wildfire Risk	0%	2%	0	14%	0

CRITICAL SERVICE GAPS

INDICATOR	HEALTH VALUE	STATE AVERAGE	STATE PERCENTILE	US AVERAGE	US PERCENTILE
Broadband Internet	17%	13%	69	14%	68
Lack of Health Insurance	8%	8%	55	9%	55
Housing Burden	Yes	N/A	N/A	N/A	N/A
Transportation Access	Yes	N/A	N/A	N/A	N/A
Food Desert	Yes	N/A	N/A	N/A	N/A

Footnotes

Report for County: Bedford, Campbell, Appomattox, Amherst, Lynchburg city