

Central Virginia Transportation Technical Committee

Region 2000 Partnership Offices

Large Conference Room

828 Main Street, 12th Floor

Lynchburg, Virginia 24504

Thursday, May 14, 2015 - 10:30 a.m.

Agenda

1. **Call to Order**.....Paul Harvey, Chair
2. **Approval of the March 5, 2015 Meeting Minutes**.....Paul Harvey, Chair
(*See attachment 2*)
3. **VTrans2040 Multimodal Transportation Plan: 2025 Needs Assessment-Regional Networks**.....Vlad Gavrilovic,
Consultant to the Commonwealth’s Office of Intermodal Policy and Investment
(*See attachments 3a – 3f*)

Mr. Gavrilovic will provide a presentation and lead a workshop regarding the regional economic needs assessment underway as part of the update to the Commonwealth’s multimodal transportation plan-VTrans2040. This needs assessment is important as it is an initial screening device for transportation projects funding eligibility. The Committee’s participation will help guide the consultant’s analysis.

An agenda for the workshop is attached, as well as the following:

- VTrans2040 Multimodal Transportation Plan Kick-Off Announcement
- General Workflow and Coordination statement
- A Data Table listing the datasets used on the effort
- Preliminary Economic Profile data for the region
- A preliminary base map of the Region showing employment density and Activity Centers identified in a 2012 study by OIPI.

Please review this material in preparation for the discussion.

4. **Central Virginia Long Range Transportation Plan Year 2040 Update**.....
.....Bob White, Deputy Director

The Committee will have the opportunity to bring up any outstanding issues related to the update. No formal presentation is planned.

5. Matters from the Committee.....All

6. Adjournment - Next meeting: June 11, 2015 at 10:30 am

General Information

- Transportation Technical Committee Statement of Purpose
See attachment GI

Central Virginia Transportation Technical Committee

828 Main Street, 12th Floor
March 5, 2015 at 10:30 a.m.

MINUTES

URBAN MEMBERS

PRESENT

Christopher Arabia.....Virginia Department of Rail and Public Transportation
Don DeBerry.....City of Lynchburg
Paul Harvey.....Campbell County
Richard Metz.....Campbell County Citizen's Representative
Rick Youngblood.....VDOT-Lynchburg District
Brad Robinson.....Bedford County

ABSENT

Doyle Allen.....Bedford County Citizen Representative
Josh Baker.....GLTC
Lee Beaumont.....Liberty University
Jeremy Bryant.....Amherst County
Mark Courtney.....Lynchburg Regional Airport
Michael Gray.....VDOT-Salem District
Jack Hobbs.....Town of Amherst
Tom Martin.....City of Lynchburg

RURAL MEMBERS

PRESENT

Christopher Arabia.....Virginia Department of Rail and Public Transportation
Paul Harvey.....Campbell County
Richard Metz.....Campbell County Citizens Representative
Brad Robinson.....Bedford County
Rick Youngblood.....VDOT-Lynchburg District

ABSENT

Doyle Allen.....Bedford County Citizen Representative
Jeremy Bryant.....Amherst County
Michael Gray.....VDOT-Salem District
Johnnie Roark.....Appomattox County
Russell Thurston.....Town of Brookneal
Bart Warner.....Bedford City
Dan Witt.....Town of Altavista

OTHERS PRESENT

Philipp Gabathuler.....Local Government Council
Kelly Hitchcock.....Local Government Council
Matt Perkins.....Local Government Council
Matthew Rehnborg.....EPR
Bob White.....Local Government Council
Bill Wuensch.....EPR

Minutes

1. Call to Order

Chairman Paul Harvey called the meeting to order at 10:30 a.m.

2. Approval of the February 12, 2015 Meeting Minutes

Upon the motion of Rick Youngblood to approve the minutes of February 12, 2015 as presented, seconded by Richard Metz, the meeting minutes of February 12, 2015 were approved unanimously.

3. Central Virginia Long Range Transportation Plan Year 2040 Update

Bill Wuensch, EPR, provided an overview of the general updates to the Long Range Plan including the return of all the U.S. 29 projects to the vision list and the addition of the Timberlake Rd/Waterlick Rd intersection improvement project. Additionally, Wuensch provided an update to HB2.

Matthew Rehnborg, EPR, provided an overview of the project evaluation results. The Committee reviewed the current listing and provided comments and recommendations including adjustments in cost estimates on certain projects and also combining related projects. Rehnborg further detailed updates on HB2 strategies and process and noted the general direction HB2 seems to be heading. Updates that were noted pertained to project eligibility and potential measures as indicated in factor areas such as, safety, congestion mitigation, accessibility, environmental quality and economic development. Rehnborg also noted the differences in factor areas between the CVLRTP model and HB2.

Additionally, at the recommendation of the Committee, Wuensch noted that a copy of the draft CVLRTP evaluation process was being sent to the office of the Secretary of Commerce for peer review.

Also, Wuensch noted the CVLRTP 2040 Plan Update will be presented to the MPO on March 19, 2015 and the public meeting to be held March 26, 2015 on the CVLRTP project evaluation method and priority project list. White added information regarding the format of the public meeting.

Comments were received from the Committee in regards to “project readiness” and the weight given to “cost-benefit” as it pertains to the HB2 evaluation process. Additionally, comments were received regarding the category/group that the CTB has designated to each area and to get out in front of requesting assignment to a different area through VDOT.

4. Discussion: FY 2016 Unified Planning Work Program and Rural Transportation Planning Assistance Program Scope of Work

Bob White presented the FY 2016 Unified Planning Work Program and Rural Transportation Planning Assistance Program Scope of Work to the Committee for review and highlighted key aspects of the Plan.

Philipp Gabathuler reviewed and highlighted projects that we are able to support with the Greater Lynchburg Transit Company’s (GLTC) planning projects such as, bus stop database management, route changes and realignment, on-board ridership survey and bus stop consolidation plan.

Upon a motion by Don DeBerry to recommend approval of the FY 2016 Unified Planning Work Program to the Central Virginia Metropolitan Planning Organization, seconded by Richard Metz, this motion passed unanimously.

5. Discussion and Consideration of the Draft FY-2016 Rural Transportation Planning Work Program

Bob White presented the Draft FY-2016 Rural Transportation Planning Work Program to the Committee for review and discussion. White highlighted key items of the Program such as working with Appomattox County on their comprehensive plan update, working with localities relative to future land use to then report to VDOT, updating the Rural Long Range Transportation Plan, and a continuation of work on alternative transportation activities and planning.

Upon a motion by Richard Metz to recommend approval of the Draft FY-2016 Rural Transportation Planning Work Program to the Region 2000 Local Government Council, seconded by Don DeBerry, this motion passed unanimously.

6. ADDED: Central Virginia Metropolitan Planning Organization's Transportation Improvement Program FY15-18 Amendment (CVTIP)

Bob White noted that GLTC is requesting an MPO adjustment to the CVTIP in order to align funding with current capital needs. Philipp Gabathuler provided further detail on the requested amendment.

Upon a motion by Rick Youngblood to recommend this CVTIP amendment for approval to the Central Virginia Metropolitan Planning Organization, seconded by Richard Metz, this motion passed unanimously.

7. Matters from the Committee

No matters were presented for discussion by the Committee.

8. Adjournment

A motion to adjourn was made by Richard Metz, seconded by Rick Youngblood, and with no objections being heard, Chairman Harvey adjourned the meeting at 11:38 a.m.

Signed: _____
Paul E. Harvey, Chair



VTrans2040



Multimodal Transportation Plan 2025 Needs Assessment – Regional Networks

AGENDA MPO Workshop #2

- Introduction
- Study Process
 - Brief Recap/Update on Study Process & Data Collection
- Economic Profile
 - Preliminary results on current economic profile for the Region
- Activity Centers Mapping
 - Hands on discussion and mark up of activity centers
- Contact List - Preferred Regional Study Team
- Other Coordination Needs / Questions

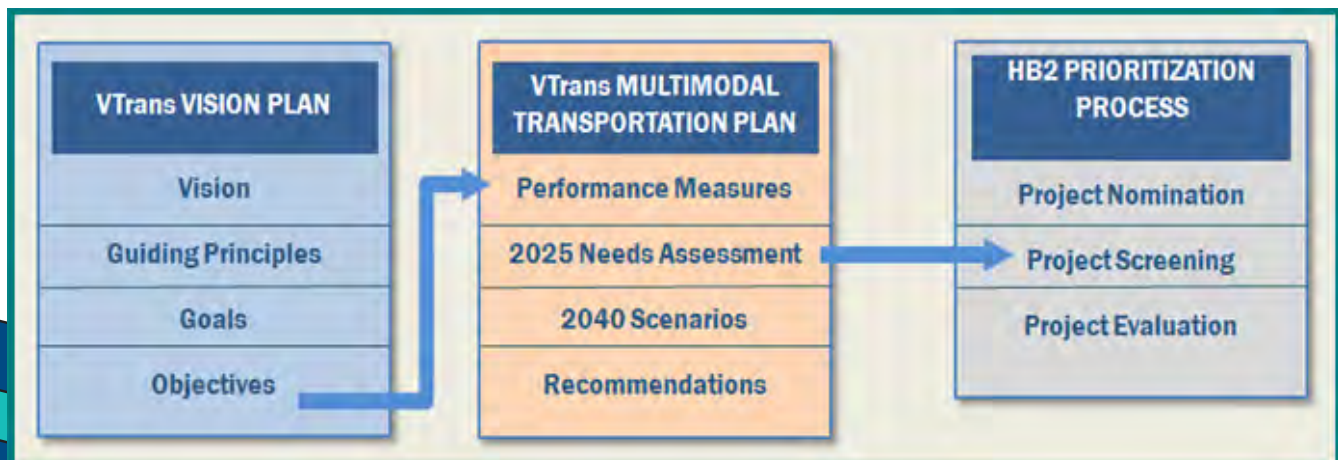
VTRANS2040 MULTIMODAL TRANSPORTATION PLAN KICK-OFF ANNOUNCEMENT - SPRING 2015 -

In April 2014 the Office of Intermodal Planning and Investment (OIPI) began work on VTrans2040, the Commonwealth's guiding policy for long-range statewide transportation plans and programs. For the first time, VTrans2040 will include two complementary documents. First, the VTrans2040 Vision document, which includes an updated Vision, Guiding Principles, Goals, and Objectives. The Vision document reflects the priorities and concerns of the Administration and includes the input we've received from you and other stakeholders across the Commonwealth. This material has been presented in draft to the Commonwealth Transportation Board (CTB) and will be available for public review soon.

Second, the VTrans2040 Multimodal Transportation Plan (VMTP) will identify the multimodal transportation needs and recommendations for 2025, as well as a discussion of potential future scenarios for 2040. It will replace the 2035 Virginia Surface Transportation Plan, which focused on highway and transit systems but did not address other modes.

The VMTP will provide a multimodal needs analysis, including a statewide assessment of multimodal system maintenance and safety needs based on recently completed agency analyses, and an assessment of 2025 projected operational and capacity needs for Corridors of Statewide Significance, Regional Networks and Urban Development Areas. This needs assessment is a critical input to the HB2 project rating process per the 2014 legislation. At this time, we are kicking off the second phase of the VTrans2040 process and plan to start collecting data and gathering your input to better inform the final VMTP.

As shown in the project schedule on the following page, the development of the VMTP Needs Assessment includes a constant and consistent outreach effort to ensure that our planning partners across the Commonwealth are working closely with us to develop a vision for the future of transportation. These outreach efforts will ensure that each region's unique characteristics are specifically incorporated into the final VMTP. More information regarding the scenario development for 2040 will be forthcoming.



VTRANS2040 MULTIMODAL TRANSPORTATION PLAN UPCOMING OUTREACH

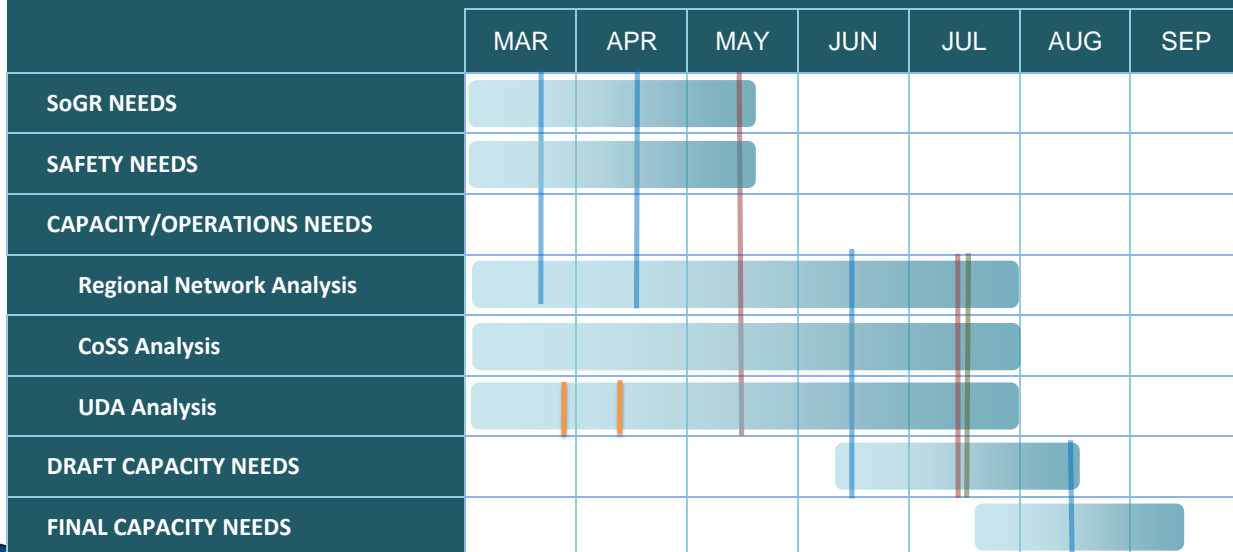
Urban Development Area: Planning stakeholders should expect to receive a notification for a webinar regarding the UDA research and identification work completed by OIPI, as well as hear stories from communities who have successfully implemented UDAs. This webinar will be in late March. If you represent a locality that has a UDA or ‘UDA like’ area that you plan to designate as a UDA, please expect a survey in April that will be used as the basis for the UDA needs assessment.

Corridor of Statewide Significance: The primary needs assessment for the CoSS will be conducted at the state level. There will be opportunities at both of the regional forum meetings in May and July to provide input on and determine the process for developing those needs.

Regional Networks: Defining the regional network profiles and needs will be a collaborative process with the MPOs. If you are in an MPO, be expecting a call within the next 2 weeks to begin discussing the methodology and data needs with the VTrans team. We will meet monthly with the MPOs to develop these needs, with two of those meetings being held in conjunction with the larger statewide forums that include all transportation planners and providers.

Statewide Safety and State of Good Repair Needs: The Statewide Needs Assessment will include Safety and State of Good Repair considerations. These needs will be shared at the first two MPO work sessions and at the first Statewide Forum for all planners and providers.

Virginia Multimodal Transportation Plan 2015
- Work Flow and Key Input Opportunities -



In-Person Work Session with MPOs

UDA Specific Outreach - Webinar in March and Needs Survey in April for Localities with UDAs

Statewide Regional Forums w/ All Planners and Providers of Transportation Services

Statewide Public Meetings



VTrans2040

Multimodal Transportation Plan

2025 Need Assessment – Regional Networks

General Workflow and Coordination

➤ Introduction

VTrans2040 includes two complimentary documents. The first is the VTrans Vision plan, which has been released for public comment and can be accessed on the CTB and vtrans.org websites. Many stakeholders throughout the Commonwealth have been included in outreach efforts for the Vision Plan, including:

- Webinars – August 20, October 7, and November 10, 2014
- Regional Forum – September 8 (held simultaneously in 5 locations)
- Public Meetings – series of 9 statewide meetings in September 2014
- CTB Presentations – Oct. 15 & Nov. 12, 2014 and Jan. 14 & Feb. 17, 2015
- Survey – July through August, 2014

The second part of the VTrans effort is the Multimodal Transportation Plan. The purpose of the VMTP is not only to create a multimodal plan to guide Virginia's planning and programming efforts, but is also to conduct a Needs Assessment for 2025, which will be the first level of screening for the HB2 process. Any projects that are eligible for funding through HB2 must meet a need identified in the VMTP.

2025 Needs are identified in the VMTP through the following process:

- **Regional Profiles:** the study team will create a regional profile, including a transportation network profile, including infrastructure and travel patterns; economic profile, including industry mix and major employment centers; and a demographic profile, including land use patterns and activity centers.
- **Future Regional Profile:** the study team will create a future economic profile that considers the future economic desires of the region, and expected/desired development patterns. Future economic drivers will be linked to workforce and freight needs through the team's research on business location decisions, information about the



transportation preferences of the businesses and workforce for non-freight industries, and freight needs of the existing and future industry sectors. Workshops will include multiple discussions of these economic-transportation linkages.

- **Needs and Gap Analysis:** identifying the gap between the existing and future regional profile, the study team will identify regional transportation needs that will ensure that the future transportation network promotes and supports the desired future development and economic profile.

The needs identified in this step of the process will be used as a screening for HB2 projects. The needs will not be specific projects, but a set of both regional and corridor level transportation demands or deficiencies that will allow MPOs to identify a preferred solution.

- **Recommendations:** the study team will propose recommendations that meet the identified regional needs. Regional planners can use these recommendations as a starting point to create project recommendations for the six- year plan, but that is optional and will NOT be a direct part of the HB2 process.

➤ Public Outreach

Targeted MPO outreach will be in lock-step with the study process outlined above. The study process includes in-person work sessions with MPO and regional staff to ensure that each regional profile includes specifically tailored information and desires from each region. The outreach includes:

- Workshop 1 – Baseline Regional Profile (Early April)
- Workshop 2 – Baseline and Future Regional Profile (Late April/Early May)
- Regional Forum – Desired Economic Regional Profile (May)
- Workshop 3 – Needs/Gap Analysis (June)
- Regional Forum – Draft Needs (July)
- Workshop 4 – Recommendations (August)

The intention of the MPO outreach is to meet with staff-level planners and providers. However, each MPO will be responsible for identifying the appropriate participants for their region. The most important criterion is to engage a group that can represent and identify regional behaviors and desires for economic development and multimodal travel. The workshops are expected to take about 2 hours each. There is some flexibility in scheduling, but each MPO must stay on track to meet the established milestones.

➤ Regional Profile

One of the first, and most important, tasks will be to work with the MPOs to develop the regional profiles. The regional profiles will include some data sources that can be collected



from existing data sources, while others will be specific to, and provided by, the MPO. The existing data sources include:

- Demographic data sources such as the Census and Virginia Center for Transportation Innovation and Research (VCTIR).
- Economic data sources such as Global Insight and Dunn & Bradstreet, which provide input on major employment centers and sector mix.
- Transportation Network data sources such as the VDOT SPS highway network, statewide accessibility index, freight demand and bottlenecks and other travel pattern and origin-destination information.

Additional sources of region specific data will be identified by working with each MPO. In particular, the study team may need input from the regions on the following:

- travel demand model inputs and outputs
- long range transportation plans and supporting documentation or data (for example, any transportation, economic or related surveys)
- regional economic development plans and supporting documentation
- identification of major activity centers
- expected areas of employment and/or population growth

➤ Next Steps

The most important element to initiating the VMTP process successfully is to work collaboratively with MPO staff to collect regional data sources and schedule the first two work sessions regarding the construction of a regional profile.

**Office of Intermodal Planning and Investment
Spring 2015**

Developing the Regional Profiles: Key Data

Boundaries		
Layer	Source	Level
Census boundaries (counties, census tracts, block groups, blocks)	Census/ACS	Statewide
MPO boundaries	Census/ACS	Statewide
Multimodal Network		
Layer	Source	Level
Roadway network: SPS (with attributes)	VDOT SPS	Statewide
Full roadway network	VDOT LRS, NAVTEC, HERE	Statewide
Rail network	DRPT	Statewide
Transit services	GTFS	Statewide
Park and ride lots	VDOT	Statewide
Regional bicycle and pedestrian facilities (optional, if available)	MPO/PDC	Regional/Local
Freight		
Layer	Source	Level
Statewide travel demand model: speed, volume, delay, traffic growth rates	VDOT	Statewide
Freight bottlenecks	TranSearch	Statewide
Freight demand	TranSearch	Statewide
Socioeconomic		
Layer	Source	Level
Existing population, age, income	Census/ACS	Statewide (Census Tract)
MPO plans and studies	MPO/PDC	Regional
Strategic growth areas (if available in GIS)	MPO/PDC	Regional
UDA & UDA-like	OIPI	Statewide
Existing activity centers (per Multimodal Design Guidelines definitions)	OIPI	Statewide
Scatter plot of existing jobs by sector by county	Dunn & Bradstreet	Statewide
Commute times relative to region/state	Census/ACS	Statewide (Census Tract)
O/D and commuting pattern data	Airsage, Census and MPO	Statewide/Regional (zonal)
Regional Travel Demand Model Output (optional, if available)	MPO/PDC	Regional
2025 population, age, income	VCTIR (Weldon, Woods & Poole)	Statewide (at PDC level)
2025 county population forecasts	Moody's or Global Insight	Statewide
Existing jobs by sector by county	Global Insight	Statewide
Forecast 2025 jobs and output by sector	Global Insight	Statewide

Central Virginia Region Economic Profile

CURRENT TOP INDUSTRIES BY WORKFORCE

Top Industries	% of Workforce
Mining/Extract	14%
Health Care	13%
Retail Trade	12%
Information	9%
Accom. / Food Serv.	9%

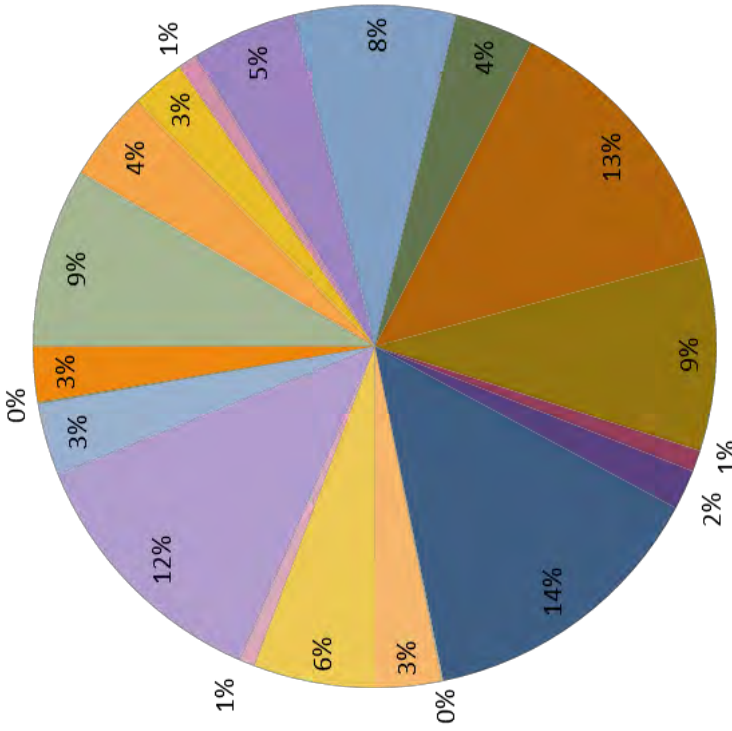
CURRENT TOP INDUSTRIES BY GDP

Top Industries	% of GDP
Manufacturing	21%
Real Estate	18%
Utilities	11%
Prof. Services	7%
Wholesale Trade	7%

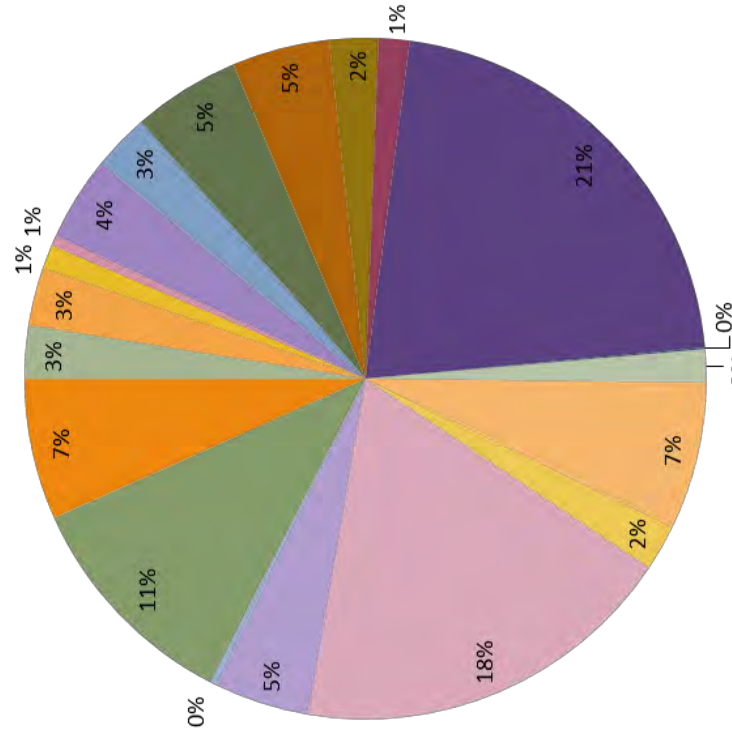
CURRENT TOP INDUSTRIES BY LOCATION QUOTIENT

Top Industry	Location Quotient
Educ. Serv.	3.17
Prof. Services	2.07
Corp. Mgmt	1.89
Construction	1.24
Accom. / Food Serv.	1.18

SUM OF 2012 EMPLOYMENT BY INDUSTRY



SUM OF 2012 GDP BY INDUSTRY



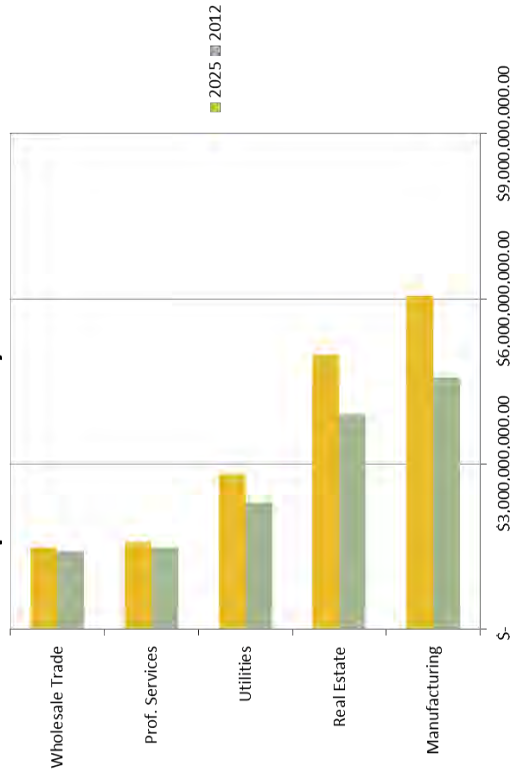
- Accom. / Food Serv.
- Educ. Serv.
- Manufacturing
- Real Estate
- Admin. and Sup.
- Finance / Ins.
- Mining/Extract
- Retail Trade
- Agriculture
- Health Care
- Other Service
- Transp. / Whousing
- Arts and Ent.
- Information
- Prof. Services
- Utilities
- Construction
- Corp. Mgmt
- Public Admin.
- Wholesale Trade

Central Virginia Region Economic Profile

FUTURE GROWTH INDUSTRIES (GDP)

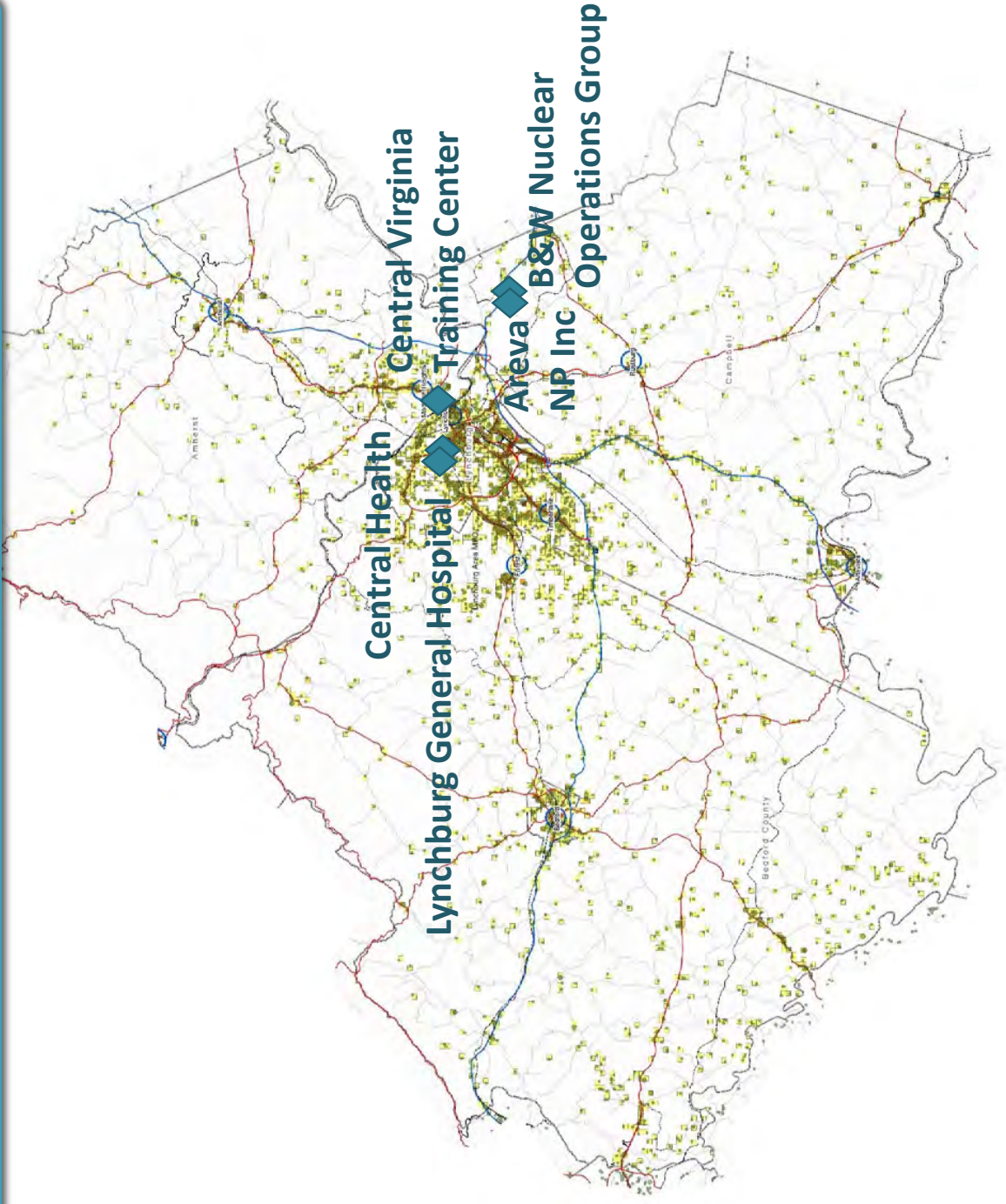
Top Industries	% Change from 2012 - 2025
Educ. Serv.	96%
Information	68%
Admin. and Sup.	44%
Mining /Extract	40%
Corp. Mgmt	33%

Top Industries by GDP

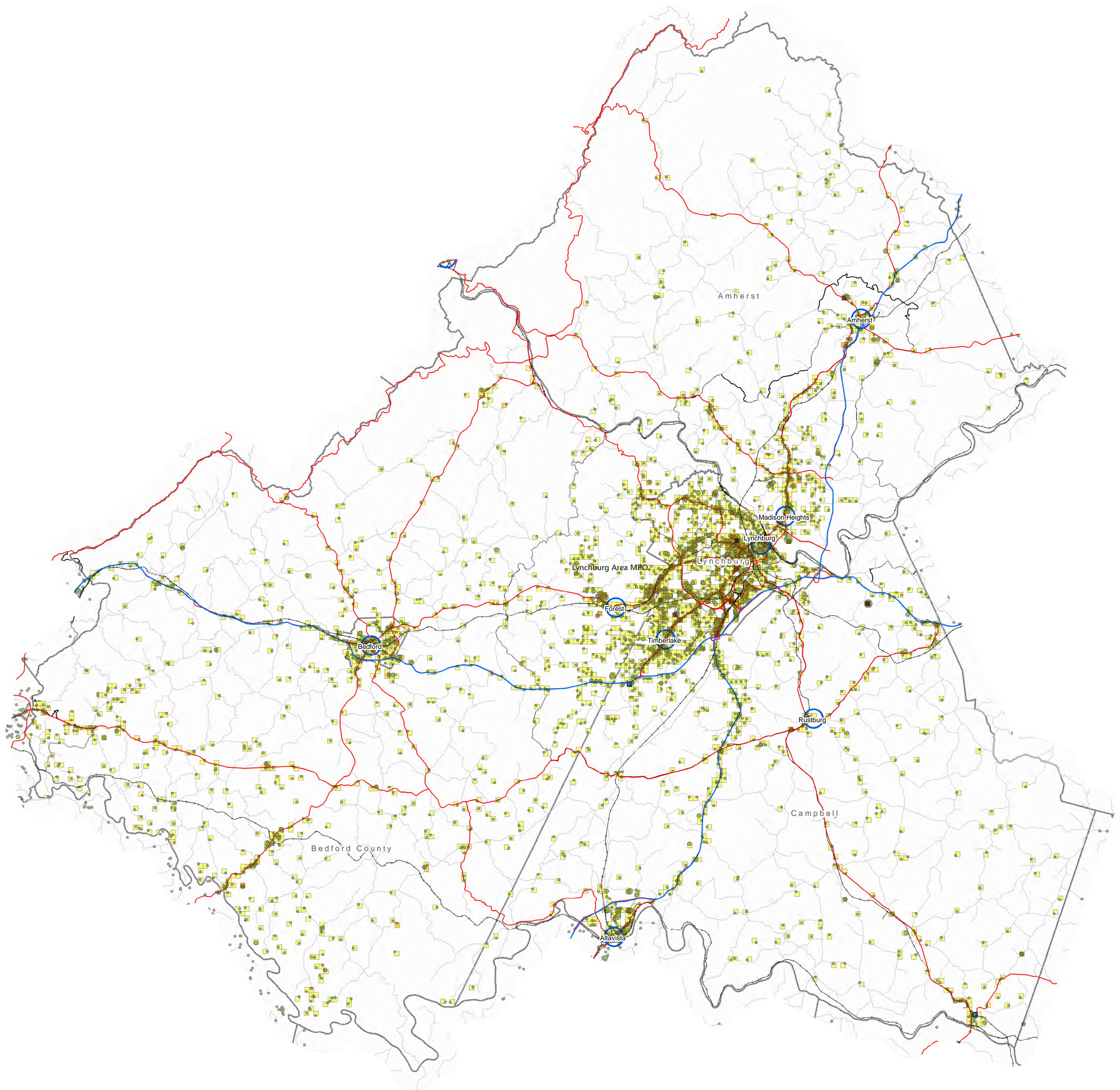


CURRENT TOP EMPLOYERS

Employers	Employees
Central Health	3,800
B&W Nuclear Operations Group	2,200
Central Virginia Training Center	1,500
Lynchburg General Hospital	1,150
Areva NP, Inc	800



Lynchburg Region: Job Density and Activity Centers



Job Site by Number of Employees*

- 0 - 39
- 40 - 210
- 211 - 800
- 801 - 2200
- 2201 - 3800

■ Park and Ride 2014

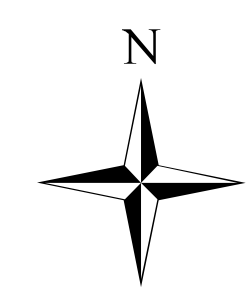
- Railroad
- City/County Boundary
- Activity Centers (2012)**
- MPO Area

Roads

- Interstate
- Primary
- Urban or County Roads
- Secondary Roads

Job Density Per Acre

- 0 - 2
- 3 - 8
- 9 - 25
- 26 - 75
- 76 - 133



LOCAL / GLOBAL / MOBILE / A CONNECTED COMMONWEALTH

* Source: InfoUSA Business Data 2012

** Source: Activity Centers defined as significant concentrations of employment and population defined within 1-mile diameter circles, based on US Census LEHD data and research summarized in OIPI

STATEMENT OF PURPOSE
Approved September 5, 2002

The Central Virginia Transportation Technical Committee (Committee) is responsible for supporting the Central Virginia Metropolitan Planning Organization's (CVMPO) and Region 2000 Regional Commission's transportation policy decision-making efforts.

The Committee provides technical advice in coordinating the federally-mandated "3-C" or continuing, comprehensive, and cooperative, transportation planning and programming process.

The Committee's three principal work efforts are updating the long range transportation plan, updating the transportation improvement program (TIP), and developing the annual unified planning work program. The Committee, in conjunction with its rural colleagues, also develops the annual Rural Transportation Planning Assistance Program Scope of Work. The Committee's intent is to review and comment on TIP projects and work program products.

The Committee acknowledges that the long range transportation plan update is the primary planning document for transportation issues in the Central Virginia region. This planning initiative drives the formulation of the transportation improvement program, as well as the annual work programs.

The Committee further realizes that the long range transportation planning process must identify regional priorities in order to fully influence project funding decisions ultimately exercised by the Commonwealth Transportation Board. The Committee's intent is to recommend priorities and encourage the CVMPO to set these priorities at the regional level.

Because of its importance, the Committee is fully committed to actively being involved in the long range transportation planning process.

In carrying out its responsibilities, the Committee will:

1. Coordinate with local planning departments to ensure an understanding of pertinent local development issues and their impact on the region;
2. Coordinate with nearby MPOs and develop an ongoing dialogue with them;
3. Strive to integrate land use and economic development, as well as transportation considerations, in its planning process;
4. Strive to be proactive as opposed to reactive in problem solving.