

# Central Virginia Transportation Technical Committee

Region 2000 Partnership Offices

*Large Conference Room*

828 Main Street, 12<sup>th</sup> Floor

Lynchburg, Virginia 24504

**Thursday, June 11, 2015 - 10:30 a.m.**

## Agenda

1. **Call to Order**.....Paul Harvey, Chair
2. **Approval of the May 14, 2015 Meeting Minutes**.....Paul Harvey, Chair  
(*See attachment 2*)
3. **Consideration and Recommendation of an Amendment to the Central Virginia Transportation Improvement Program Fiscal Years 2015 – 2018 (CVTIP)**.....  
.....Bob White, Deputy Director  
(*See attachment 3*)

The Committee will have the opportunity to bring up any outstanding issues related to the update. No formal presentation is planned.

4. **VTrans2040 Multimodal Transportation Plan: 2025 Needs Assessment-Regional Networks**.....Vlad Gavrilovic, Consultant to the Commonwealth’s Office of Intermodal Policy and Investment  
(*See attachment. 4*)

Mr. Gavrilovic will continue the discussion and lead a workshop regarding the regional economic needs assessment underway as part of the update to the Commonwealth’s multimodal transportation plan-VTrans2040. This needs assessment is important as it is an initial screening device for transportation projects funding eligibility. The Committee’s participation will help guide the consultant’s analysis.

The attached material provides background for this item. Please review in preparation for the meeting.

5. **Matters from the Committee**.....All
6. **Adjournment** - Next meeting: **July 9, 2015 at 10:30 am**

### General Information

- Transportation Technical Committee Statement of Purpose (*See attachment GI*)

**Central Virginia Transportation Technical Committee**

828 Main Street, 12th Floor  
May 14, 2015 at 10:30 a.m.

**MINUTES**

**URBAN MEMBERS**

**PRESENT**

Christopher Arabia.....Virginia Department of Rail and Public Transportation  
 Lee Beaumont.....Liberty University  
 David Cook *for Rick Youngblood*.....VDOT-Lynchburg District  
 Don DeBerry.....City of Lynchburg  
 Paul Harvey.....Campbell County  
 Richard Metz.....Campbell County Citizen’s Representative  
 Brad Robinson.....Bedford County

**ABSENT**

Doyle Allen.....Bedford County Citizen Representative  
 Josh Baker.....GLTC  
 Jeremy Bryant.....Amherst County  
 Mark Courtney.....Lynchburg Regional Airport  
 Michael Gray.....VDOT-Salem District  
 Jack Hobbs .....Town of Amherst  
 Tom Martin.....City of Lynchburg

**RURAL MEMBERS**

**PRESENT**

Christopher Arabia.....Virginia Department of Rail and Public Transportation  
 David Cook *for Rick Youngblood*.....VDOT-Lynchburg District  
 Paul Harvey.....Campbell County  
 Richard Metz.....Campbell County Citizens Representative  
 Brad Robinson.....Bedford County

**ABSENT**

Doyle Allen.....Bedford County Citizen Representative  
 Jeremy Bryant.....Amherst County  
 Michael Gray.....VDOT-Salem District  
 Johnnie Roark.....Appomattox County  
 Russell Thurston.....Town of Brookneal  
 Bart Warner.....Bedford City  
 Dan Witt.....Town of Altavista

**OTHERS PRESENT**

Gary Christie.....Local Government Council  
Philipp Gabathuler.....Local Government Council  
Jaclyn Garet.....Renaissance Planning  
Matt Perkins.....Local Government Council  
Bob White.....Local Government Council  
Bill Wuensch.....EPR

**Minutes**

**1. Call to Order**

Chairman Paul Harvey called the meeting to order at 10:30 a.m.

**2. Approval of the March 5, 2015 Meeting Minutes**

Upon the motion of Don DeBerry to approve the minutes of March 5, 2015 as presented, seconded by Brad Robinson, the meeting minutes of March 5, 2015 were approved unanimously.

**3. VTrans2040 Multimodal Transportation Plan: 2025 Needs Assessment – Regional Networks**

Vlad Gavrilovic presented information regarding the ongoing process of the development of the Multimodal Transportation Plan as it pertains to VTrans2040, the statewide transportation plan. Gavrilovic overviewed topics such as the legislative basis for the project, definition of VTrans2040, explanation of Virginia’s Multimodal Transportation Plan (VMTP) and its purpose. Also, he noted that part of the VMTP is to also conduct a Needs Assessment for 2025, which will be the first level of screening for the HB2 process and stressing that projects that are eligible for funding through HB2 must meet a need identified in the VMTP.

Additionally, Gavrilovic noted that one of the first tasks will be to develop the regional profiles. Through a workshop exercise, Gavrilovic presented the data information that had already been assembled (demographic, economic, and transportation network data) in creating these regional profiles and asked the Committee to review, comment and make recommendations.

Vlad and his team worked with the Committee to identify additional information for the regional profiles.

**4. Central Virginia Long Range Transportation Plan Year 2040 Update**

Bob White noted that the project is moving forward with continued support and is on schedule.

**5. Matters from the Committee**

No matters were presented for discussion by the Committee.

**6. Adjournment**

A motion to adjourn was made by Brad Robinson, seconded by Lee Beaumont, and with no objections being heard, Chairman Harvey adjourned the meeting at 11:20 a.m.

Signed: \_\_\_\_\_  
Paul E. Harvey, Chair

### Narrative of Changes to the CVTIP FY15-18 (Pending MPO Approval 7/16/15)

DRPT has proposed the following adjustments to the CVTIP FY15-18. These funding adjustments reflect changes in agency needs. The changes have been reviewed and approved by GLTC.

	Previous Funding	FY 2015	FY 2016	FY 2017	FY 2018	Total FY 2015-2018
<b>CENTRAL VIRGINIA METROPOLITAN PLANNING ORGANIZATION</b>						
STIP ID:	<b>GLTC001</b>	Title: Operating Assistance		Recipient: <b>Greater Lynchburg Transit Company</b>		
FTA 5307		2,039	2,034	2,034	2,034	FTA 5307
State		1,462	1,458	1,458	1,458	State
Local		2,331	2,340	2,340	2,340	Local
Revenues		1,259	1,259	1,259	1,259	Revenues
<b>Year Total:</b>	-	<b>7,091</b>	<b>7,091</b>	<b>7,091</b>	<b>7,091</b>	<b>Total Funds:</b>
						<b>28,364</b>



	Previous Funding	FY 2015	FY 2016	FY 2017	FY 2018	Total FY 2015-2018
<b>LYNCHBURG METROPOLITAN PLANNING ORGANIZATION</b>						
STIP ID:	<b>GLTC001</b>	Title: Operating Assistance		Recipient: <b>Greater Lynchburg Transit Company</b>		
FTA 5307		2,039	2,018	2,034	2,034	FTA 5307
State		1,462	1,427	1,458	1,458	State
Local		2,331	2,995	2,340	2,340	Local
Revenues		1,259	1,308	1,259	1,259	Revenues
<b>Year Total:</b>	-	<b>7,091</b>	<b>7,748</b>	<b>7,091</b>	<b>7,091</b>	<b>Total Funds:</b>
						<b>29,021</b>
Description:	Adj #1 - Reallocated funding per TIP adjustment from MPO dated 8/4/2014. Increased FTA 5307 FY2015 \$5K, Increased State \$4K, Decreased Local \$9K. Previously approved in Adj #31 in FY12-FY15 STIP. Adjustment approved 10/8/2014. Adjustment: Increase FY16 \$657K (Decrease FTA 5307 \$16K, decrease State \$31K, increase local \$655K, increase revenues \$49K) in accordance with draft FY16 SYIP.					

STIP ID:	GLTC010	Title: Expansion Rolling Stock	Recipient: <b>Greater Lynchburg Transit Company</b>				
Flexible STP			88	5,255	5,056	Flexible STP	10,399
State			11	657	632	State	1,300
Local			11	657	632	Local	1,300
<b>Year Total:</b>	-	-	<b>110</b>	<b>6,569</b>	<b>6,320</b>	<b>Total Funds:</b>	<b>12,999</b>
Description:							



STIP ID:	GLTC010	Title: Expansion Rolling Stock	Recipient: <b>Greater Lynchburg Transit Company</b>				
Flexible STP			-	5,255	5,056	Flexible STP	10,311
FTA 5307			88			FTA 5307	88
State			18	657	632	State	1,307
Local			4	657	632	Local	1,293
<b>Year Total:</b>	-	-	<b>110</b>	<b>6,569</b>	<b>6,320</b>	<b>Total Funds:</b>	<b>12,999</b>
Description:	Adjustment: Add funding for FY16 \$110K (Add FTA 5307 \$88K, add State \$18K, add local \$4K) in accordance with draft FY16 SYIP.						

STIP ID:	GLTC020	Title: ADP Hardware	Recipient: <b>Greater Lynchburg Transit Company</b>				
Flexible STP			22	269		Flexible STP	291
State			3	34		State	37
Local			3	34		Local	37
<b>Year Total:</b>	-	-	<b>28</b>	<b>337</b>	-	<b>Total Funds:</b>	<b>365</b>
Description:							



STIP ID:	GLTC020	Title: ADP Hardware	Recipient: <b>Greater Lynchburg Transit Company</b>				
Flexible STP			-			Flexible STP	-
FTA 5307			22			FTA 5307	22
State			4			State	4
Local			2			Local	2
<b>Year Total:</b>	-	-	<b>28</b>	-	-	<b>Total Funds:</b>	<b>28</b>
Description:	Adjustment: Add funding for FY16 \$28K (Add FTA 5307 \$22K, add State \$4K, add local \$2K) in accordance with draft FY16 SYIP.						

STIP ID:	<b>GLTC021</b>	Title: Purchase Support Vehicles				Recipient: <b>Greater Lynchburg Transit Company</b>	
Flexible STP		61	95	66	67	Flexible STP	289
State	-	12	12	8	9	State	41
Local	-	3	12	8	9	Local	32
<b>Year Total:</b>	-	<b>76</b>	<b>119</b>	<b>82</b>	<b>85</b>	<b>Total Funds:</b>	<b>362</b>
Description:							



STIP ID:	<b>GLTC021</b>	Title: Purchase Support Vehicles				Recipient: <b>Greater Lynchburg Transit Company</b>	
Flexible STP		61	-	66	67	Flexible STP	194
FTA 5307		-	96	-	-	FTA 5307	96
State	-	12	19	8	9	State	48
Local	-	3	4	8	9	Local	24
<b>Year Total:</b>	-	<b>76</b>	<b>119</b>	<b>82</b>	<b>85</b>	<b>Total Funds:</b>	<b>362</b>
Description:	Adjustment: Decrease FY16 funding \$39K (increase FTA 5307 \$96K, decrease Flex STP \$126K, increase State \$3K, decrease local \$12K) in accordance with draft FY16 SYIP.						

STIP ID:	<b>GLTC026</b>	Title: Bus Construction Admin/Maint Facility				Recipient: <b>Greater Lynchburg Transit Company</b>	
FTA 5339		4,679	2,351			FTA 5339	7,030
Flexible STP		1,761	4,089			Flexible STP	5,850
State	-	3,910	3,910			State	7,820
Local	-	1,150	1,150			Local	2,300
<b>Year Total:</b>	-	<b>11,500</b>	<b>11,500</b>	-	-	<b>Total Funds:</b>	<b>15,970</b>
Description:							



STIP ID:	<b>GLTC026</b>	Title: Bus Construction Admin/Maint Facility				Recipient: <b>Greater Lynchburg Transit Company</b>	
FTA 5339		4,679	2,348			FTA 5339	7,027
Flexible STP		1,761	4,092			Flexible STP	5,853
State	-	3,910	3,910			State	7,820
Local	-	1,150	1,150			Local	2,300
<b>Year Total:</b>	-	<b>11,500</b>	<b>11,500</b>	-	-	<b>Total Funds:</b>	<b>23,000</b>
Description:	Adj #1 - Moved federal funding from Flexible STP to FTA 5339 per TIP adjustment approved on 9/9/2014 by MPO. No change in total costs or total federal funding. Previously adjusted #33 in the FY12-FY15 STIP. Adjustment approved 10/8/2014. Adjustment: Change FY16 funding (decrease FTA 5339 \$3K, increase Flex STP \$3K) in accordance with draft FY16 SYIP.						

STIP ID:	<b>GLTC027</b>	Title: Radios				Recipient: <b>Greater Lynchburg Transit Company</b>	
Flexible STP			20			Flexible STP	20
State	-		3			State	3
Local	-		3			Local	3
<b>Year Total:</b>	-	-	<b>26</b>	-	-	<b>Total Funds:</b>	<b>26</b>
Description:							



STIP ID:	<b>GLTC027</b>	Title: Radios				Recipient: <b>Greater Lynchburg Transit Company</b>	
Flexible STP			-			Flexible STP	-
FTA 5307			21			FTA 5307	21
State	-		4			State	4
Local	-		1			Local	1
<b>Year Total:</b>	-	-	<b>26</b>	-	-	<b>Total Funds:</b>	<b>26</b>
Description:	Adjustment: Add funding for FY16 \$26K (Add FTA 5307 \$21K, add State \$4K, add local \$1K) in accordance with draft FY16 SYIP.						

STIP ID:	<b>GLTC031</b>	Title: Purchase Surveillance/Security Equipment				Recipient: <b>Greater Lynchburg Transit Company</b>	
Flexible STP			59			Flexible STP	59
State	-		7			State	7
Local	-		7			Local	7
<b>Year Total:</b>	-	-	<b>73</b>	-	-	<b>Total Funds:</b>	<b>73</b>
Description:							



STIP ID:	<b>GLTC031</b>	Title: Purchase Surveillance/Security Equipment				Recipient: <b>Greater Lynchburg Transit Company</b>	
Flexible STP			-			Flexible STP	-
FTA 5307			58			FTA 5307	58
State	-		12			State	12
Local	-		3			Local	3
<b>Year Total:</b>	-	-	<b>73</b>	-	-	<b>Total Funds:</b>	<b>73</b>
Description:	Adjustment: Add funding for FY16 \$73K (Add FTA 5307 \$58K, add State \$12K, add local \$3K) in accordance with draft FY16 SYIP.						

STIP ID:	<b>CAAA001</b>	Title: Paratransit Vehicles	Recipient: <b>Central Va Area Agency on Aging</b>				
FTA 5310		136	139	141	141	FTA 5310	557
State	-					State	-
Local	-	34	35	35	35	Local	139
<b>Year Total:</b>	-	<b>170</b>	<b>174</b>	<b>176</b>	<b>176</b>	<b>Total Funds:</b>	<b>696</b>
Description:							



STIP ID:	<b>CAAA001</b>	Title: Paratransit Vehicles	Recipient: <b>Central Va Area Agency on Aging</b>				
FTA 5310		136	144	141	141	FTA 5310	562
State	-					State	-
Local	-	34	36	35	35	Local	140
<b>Year Total:</b>	-	<b>170</b>	<b>180</b>	<b>176</b>	<b>176</b>	<b>Total Funds:</b>	<b>702</b>
Description: <b>Adjustment: Increase FY16 funding \$6K (Increase FTA 5310 \$5K, increase local \$1K) in accordance with draft FY16 SYIP.</b>							

STIP ID:	<b>CVCS001</b>	Title: Paratransit Vehicles	Recipient: <b>Horizon Behavioral Health</b>				
FTA 5310			64	64	64	FTA 5310	192
State	-					State	-
Local	-		16	16	16	Local	48
<b>Year Total:</b>	-	-	<b>80</b>	<b>80</b>	<b>80</b>	<b>Total Funds:</b>	<b>240</b>
Description:							



STIP ID:	<b>CVCS001</b>	Title: Paratransit Vehicles	Recipient: <b>Horizon Behavioral Health</b>				
FTA 5310			29	64	64	FTA 5310	157
State	-					State	-
Local	-		7	16	16	Local	39
<b>Year Total:</b>	-	-	<b>36</b>	<b>80</b>	<b>80</b>	<b>Total Funds:</b>	<b>196</b>
Description: <b>Adjustment: Decrease FY16 funding \$44K (increase FTA 5310 \$35K, decrease local \$9K) in accordance with draft FY16 SYIP.</b>							

# VMTP Regional Networks Needs Assessment

## Briefing Materials

for Transportation Technical Committee Review

June 2, 2015

(In Preparation for the June TTC Meeting)

### Background

As part of the process of developing the Statewide Transportation Plan, VTrans2040, the Virginia Office of Intermodal Planning and Investment (OIP) and its consultant team are reaching out to all of Virginia's MPOs to get ongoing input as we develop the Transportation Needs Assessment as part of VTrans. VTrans2040 includes two complementary documents. The first is the VTrans Vision plan, which has been released for public comment and can be accessed on the CTB and vtrans.org websites. Many stakeholders throughout the Commonwealth have been included in outreach efforts for the Vision Plan, which have included:


- Webinars – August 20, October 7, and November 10, 2014
- Regional Forum – September 8 (held simultaneously in 5 locations)
- Public Meetings – series of 9 statewide meetings in September 2014
- CTB Presentations – Oct. 15 & Nov. 12, 2014 and Jan. 14 & Feb. 17, 2015
- Survey – July through August, 2014

The second part of the VTrans effort is the Multimodal Transportation Plan. The purpose of the VMTP is not only to create a multimodal plan to guide Virginia's planning and programming efforts, but is also to conduct a Needs Assessment for 2025, which will be the first level of screening for the HB2 process. Any projects that are eligible for funding through HB2 must meet a need identified in the VMTP.

2025 Needs are identified in the VMTP through the following process:

- **Regional Profiles:** the study team will create a regional profile, including a transportation network profile, including infrastructure and travel patterns; economic profile, including industry mix and major employment centers; and a demographic profile, including land use patterns and activity centers.
- **Future Regional Profile:** the study team will create a future economic profile that considers the future economic desires of the region, and expected/desired development patterns. Future economic drivers will be linked to workforce and freight needs through the team's research on business location decisions, information about the transportation preferences of the businesses and workforce for non-freight industries,





and freight needs of the existing and future industry sectors. Workshops with MPO regions will include discussions of these economic-transportation linkages.

- **Needs and Gap Analysis:** identifying the gap between the existing and future regional profile, the study team will identify regional transportation needs to ensure that the future transportation network promotes and supports the desired future development and economic profile.

The needs identified in this step of the process will be used as a screening for HB2 projects. The needs will not be specific projects, but a set of both regional and corridor level transportation demands or deficiencies that will allow MPO regions to identify a preferred solution.

- **Recommendations:** the study team will propose recommendations that meet the identified regional needs. Regional planners can use these recommendations as a starting point to create project recommendations for the six- year plan, but that is optional and will NOT be a direct part of the HB2 process.

➤ **Public Outreach**

Targeted MPO outreach will be in coordination with the study process outlined above. The study process includes in-person work sessions with MPO and regional staff to ensure that each regional profile includes specifically tailored information and desires from each region. The outreach includes:


The intention of the MPO outreach is to meet with staff-level planners and providers. However, each MPO will be responsible for identifying the appropriate participants for their region. The most important criterion is to engage a group that can represent and identify regional behaviors and desires for economic development and multimodal travel.

## Prior Outreach

On April 16, 2015, OIPI's consultant team introduced the VMTP Needs Assessment to the Central Virginia MPO Policy Board in a briefing at their regular meeting. On May 14, 2015 the consultant team made a presentation to the technical Advisory Committee and shared and got input on preliminary data on the economic and transportation conditions and potential Activity centers in the region.

## First Regional Forum

On May 28, 2015, the First Regional Forum for the VMTP Needs Assessment was held in the Lynchburg Government Center IT Building. Representatives from the MPO and local government staff and VDOT attended the Forum to provide input into the data collection and preliminary Needs input to the consultant team. The information that was presented to them is summarized in the following pages. The consultant team shared three Summary Maps with the participants, which are included below:

- 
- Economic Conditions – a summary of general economic data for current employment, economic output and major employers, as well as 2025 forecasts for future growth in economic sectors
  - Transportation Conditions – a summary of preliminary available data on highway conditions, freight data. Commuting patterns and accessibility to employment for the region
  - Needs Discussion – a base map of the region on which participants indicated where potential transportation needs might be identified based on the initial review of regional economic and transportation conditions.

## Materials Included

The following pages show the three Summary Maps described above, with the input on preliminary Transportation Needs provided by the participants summarized on the Needs Discussion Map. In addition, there are blow ups of each of the individual charts, tables and analysis maps that were presented in the Forum. All of this data is still preliminary and will continue to be refined as the Needs Assessment proceeds through the end of July 2015.

## Specific Input Needed

In general, the TTC is requested to provide input on the following:

Accuracy of the Data – let the consultants know if there are any clear inaccuracies in the data they have developed to date. Also, if there are any other data sources that should be reviewed to better understand economic and transportation conditions in the region. Although the data sources used statewide need to be kept generally consistent across all MPO regions in order to have a unified statewide analysis, sometimes other local data sources can shed additional light on what the statewide findings show.

Input on Needs – specific input is requested as to whether the numbered list of Needs on the Needs Discussion sheet fairly reflects the state of regional transportation needs. This is not a final list of Needs and more data will be obtained and analysis performed in the coming weeks to refine the Needs list. At this point however, general input is sought on whether the Needs list seems to be capturing the major regional transportation needs. The final Draft Needs for the region will be presented at the next Regional Forum in July and input from MPO staff and the public will be sought at that time.

## **Summary Maps**

*VMTP Regional Networks Needs Assessment*

Can be found by visiting:

[https://dl.dropboxusercontent.com/u/99295224/VMTP\\_Summary-Maps-6-11-2015.pdf](https://dl.dropboxusercontent.com/u/99295224/VMTP_Summary-Maps-6-11-2015.pdf)

Should you have any questions or concerns please contact Matt Perkins, [Email](#).

# Central Virginia Region Economic Profile

## CURRENT TOP INDUSTRIES BY EMPLOYMENT

Top Industries	% of Workforce
Manufacturing	14%
Public Admin.	13%
Retail Trade	12%
Health Care	9%
Accom. / Food Serv.	9%

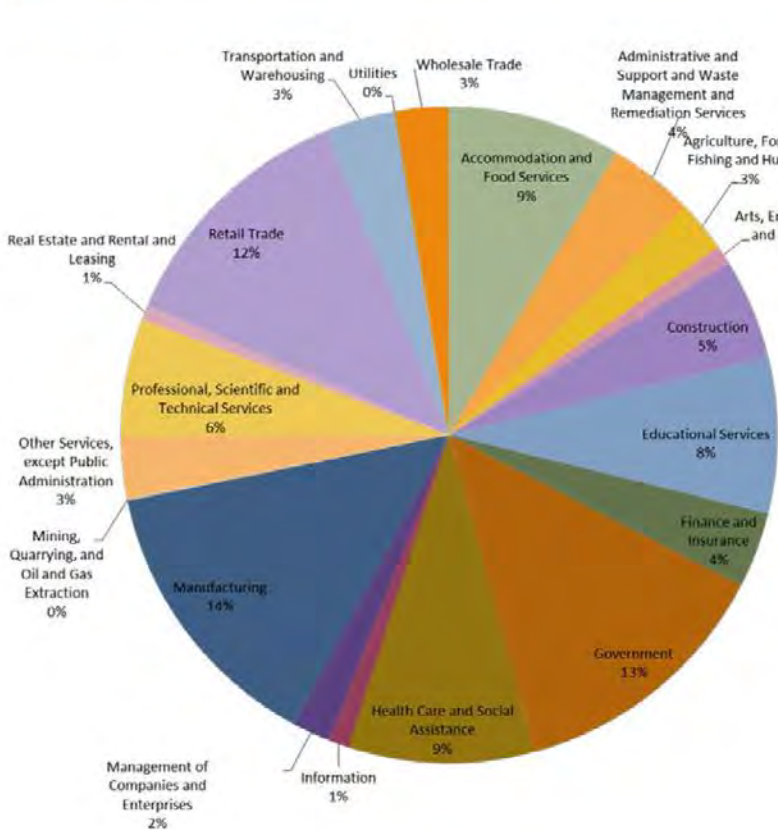
## CURRENT TOP INDUSTRIES BY LOCATION QUOTIENT

Top Industry	Location Quotient
Educ. Serv.	3.17
Prof. Services	2.07
Corp. Mgmt	1.89
Construction	1.24
Accom. / Food Serv.	1.18

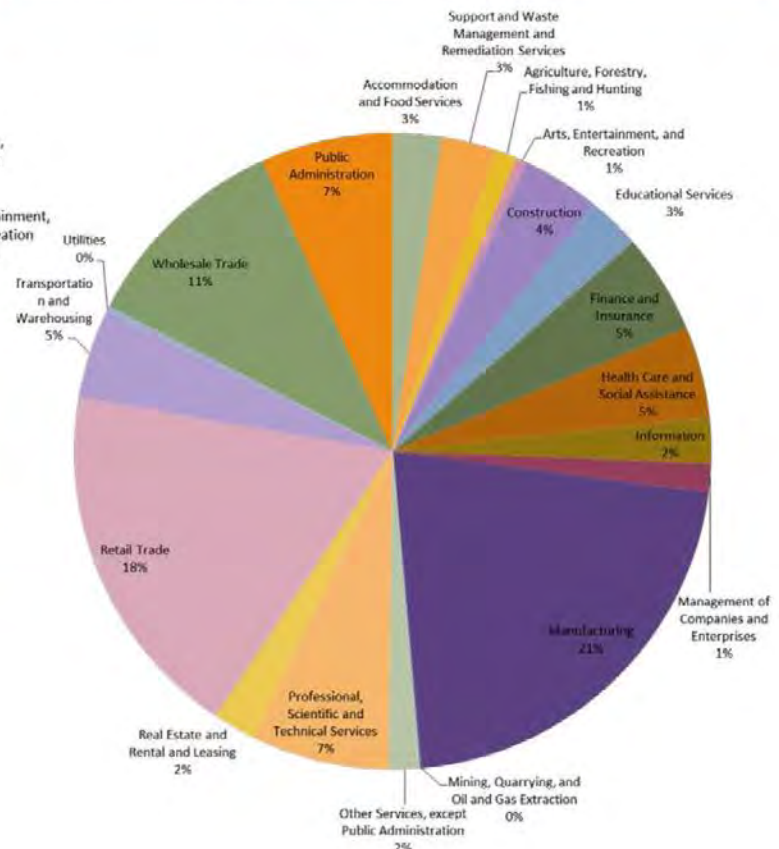
## CURRENT TOP INDUSTRIES BY GDP

Top Industries	% of GDP
Manufacturing	21%
Real Estate	18%
Utilities	11%
Prof. Services	7%
Wholesale Trade	7%

## SUM OF 2012 EMPLOYMENT BY INDUSTRY



## SUM OF 2012 GDP BY INDUSTRY



Source: IHS Global Insight Data, 2012

12 of 26 - June 11, 2015 - TTC Agenda

CVMPO Data for May, 2015 Regional Forum - Renaissance Planning Group - DRAFT 6/1/15

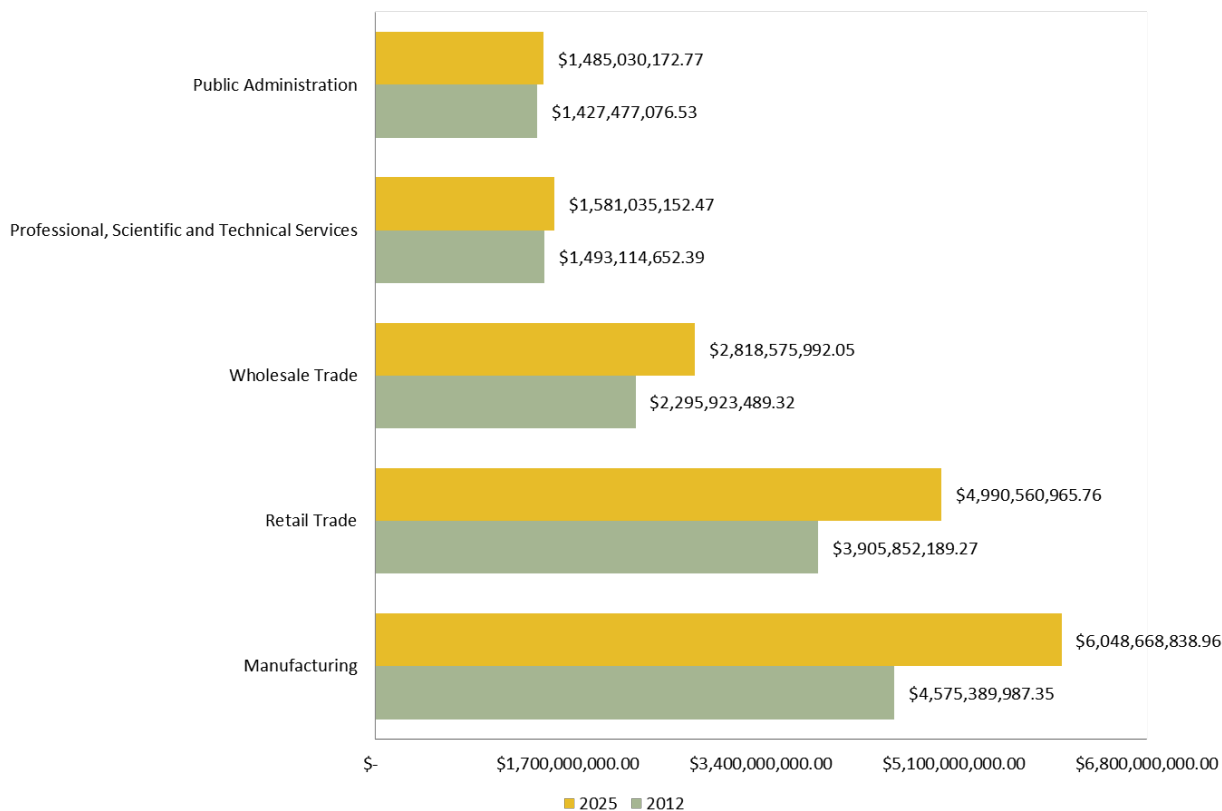
# Central Virginia Region Economic Profile

## FUTURE GROWTH INDUSTRIES (GDP)

Top Industries	% Change from 2012 - 2025
Educ. Serv.	96%
Information	68%
Admin. and Sup.	44%
Mining /Extract	40%
Corp. Mgmt	33%

## CURRENT TOP EMPLOYERS

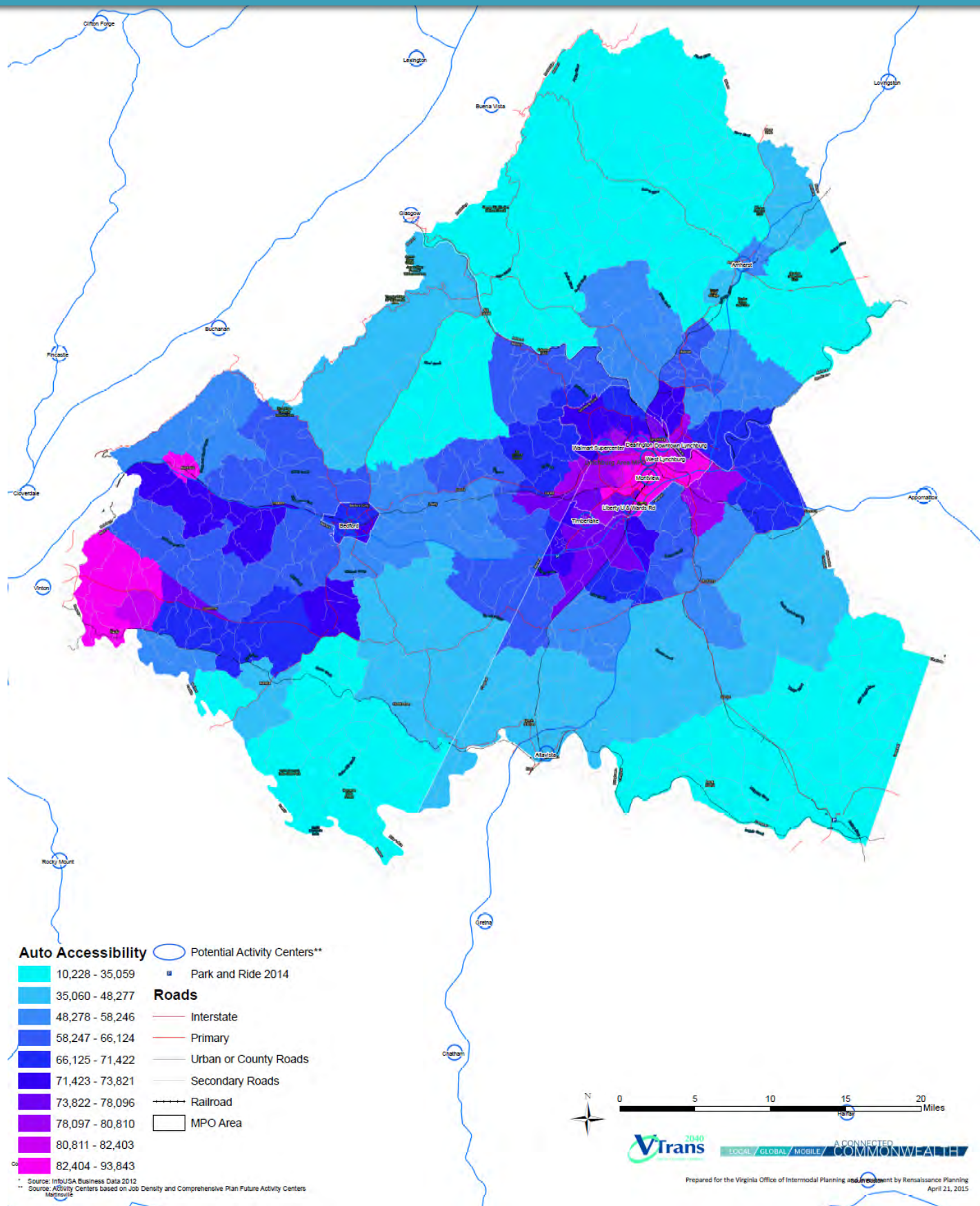
Employers	Employees
Liberty University	6,000
Centra Health	3,800
B&W Nuclear Operations Group	2,200
Central Virginia Training Center	1,500
Areva NP, Inc	1,500



Source: IHS Global Insight Data, 2012 for Future Growth; InfoUSA data for Top Employers and Map, supplemented by local input.



# Central Virginia Region Transportation Profile

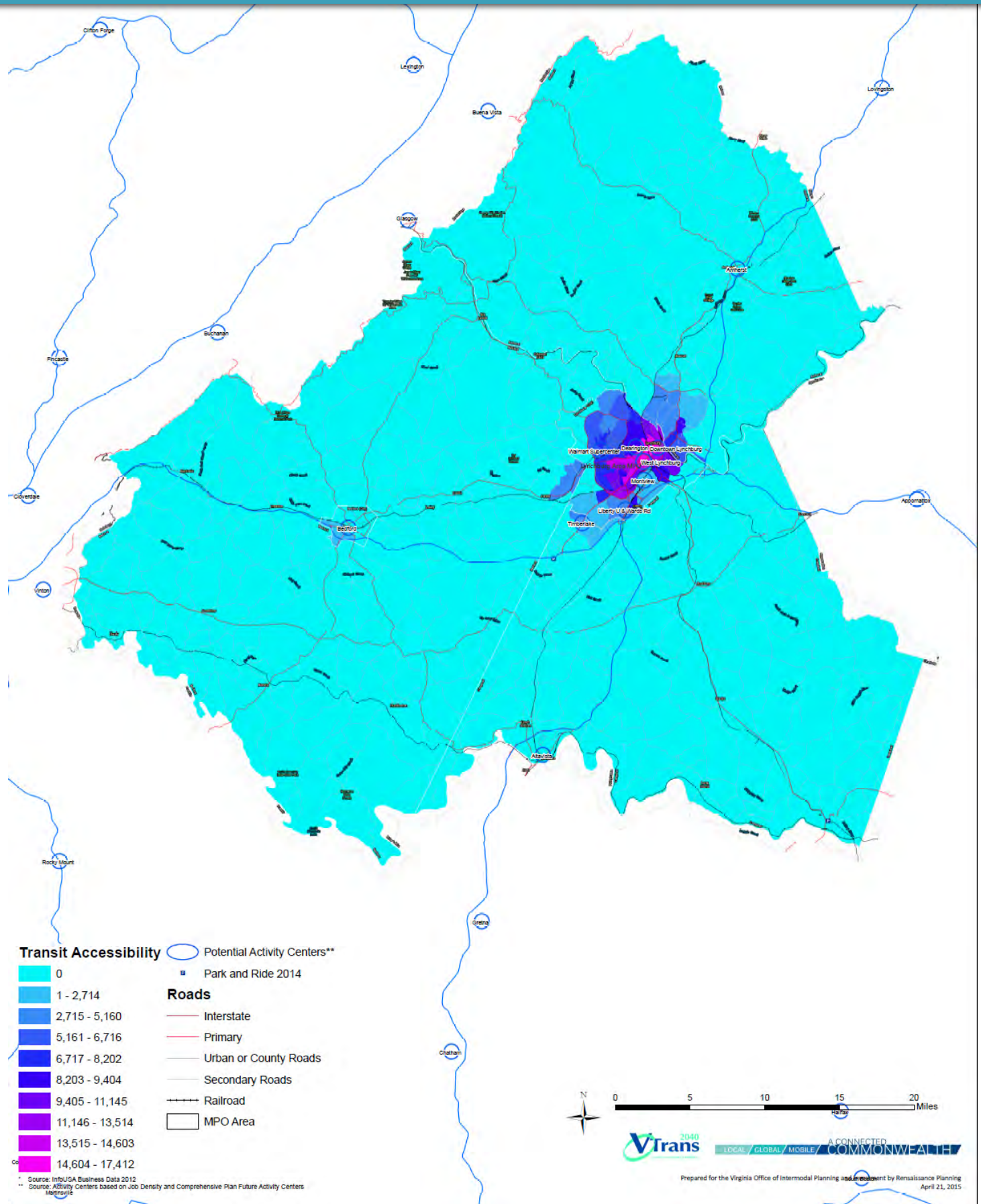


Source: Accessibility Model from Consultant Team – Calculation of number of distance-weighted jobs accessible in 45 minutes drive time (congested) from Census Block Groups

**14 of 26 - June 11, 2015 - TTC Agenda**

CVMPO Data for May, 2015 Regional Forum - Renaissance Planning Group - DRAFT 6/1/15

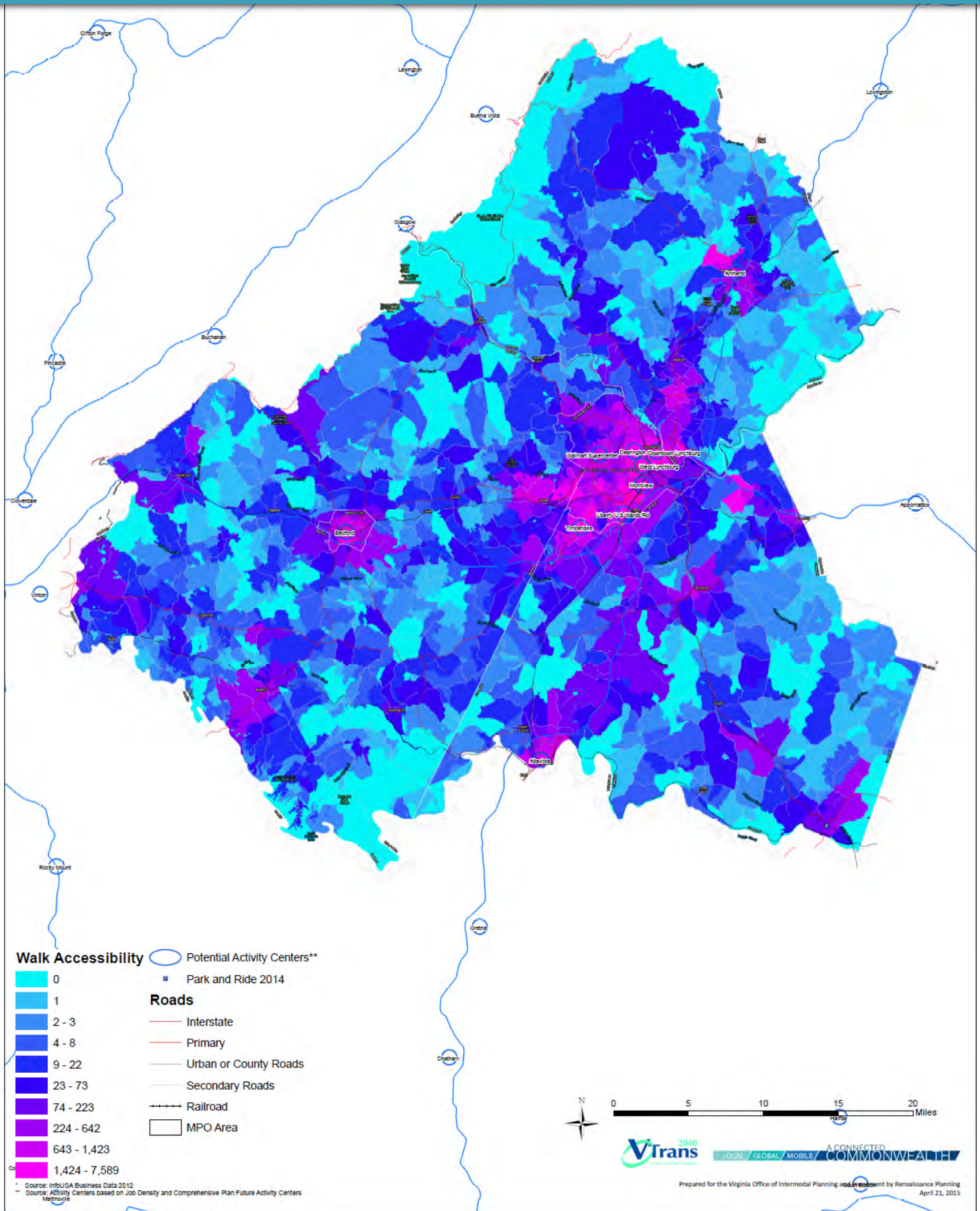
# Central Virginia Region Transportation Profile



Source: Accessibility Model from Consultant Team – Calculation of number of distance-weighted jobs accessible in 45 minutes transit travel time (includes all jobs within 45 minutes from Census Block Groups) **TTC Agenda**

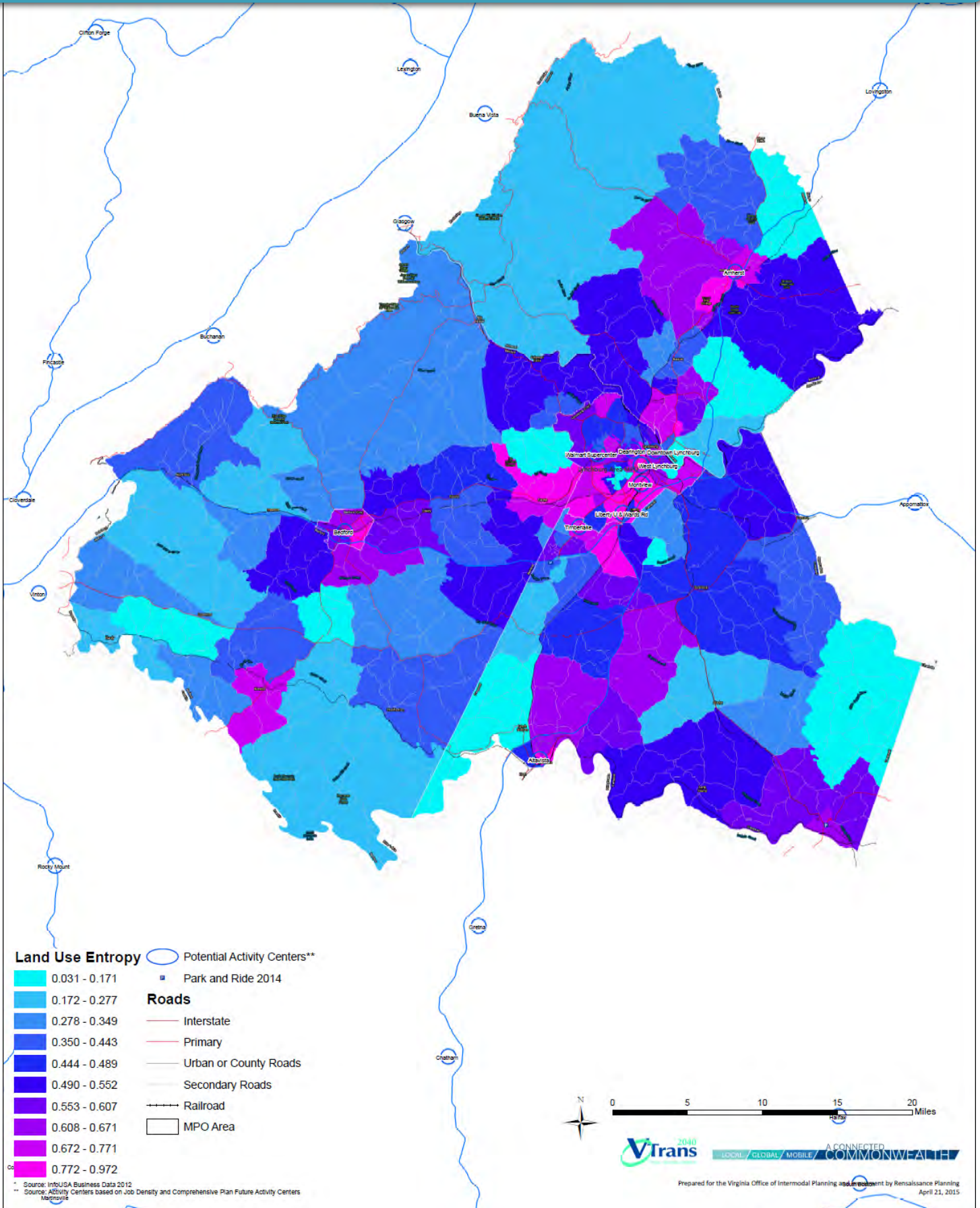


# Central Virginia Region Transportation Profile





# Central Virginia Region Transportation Profile

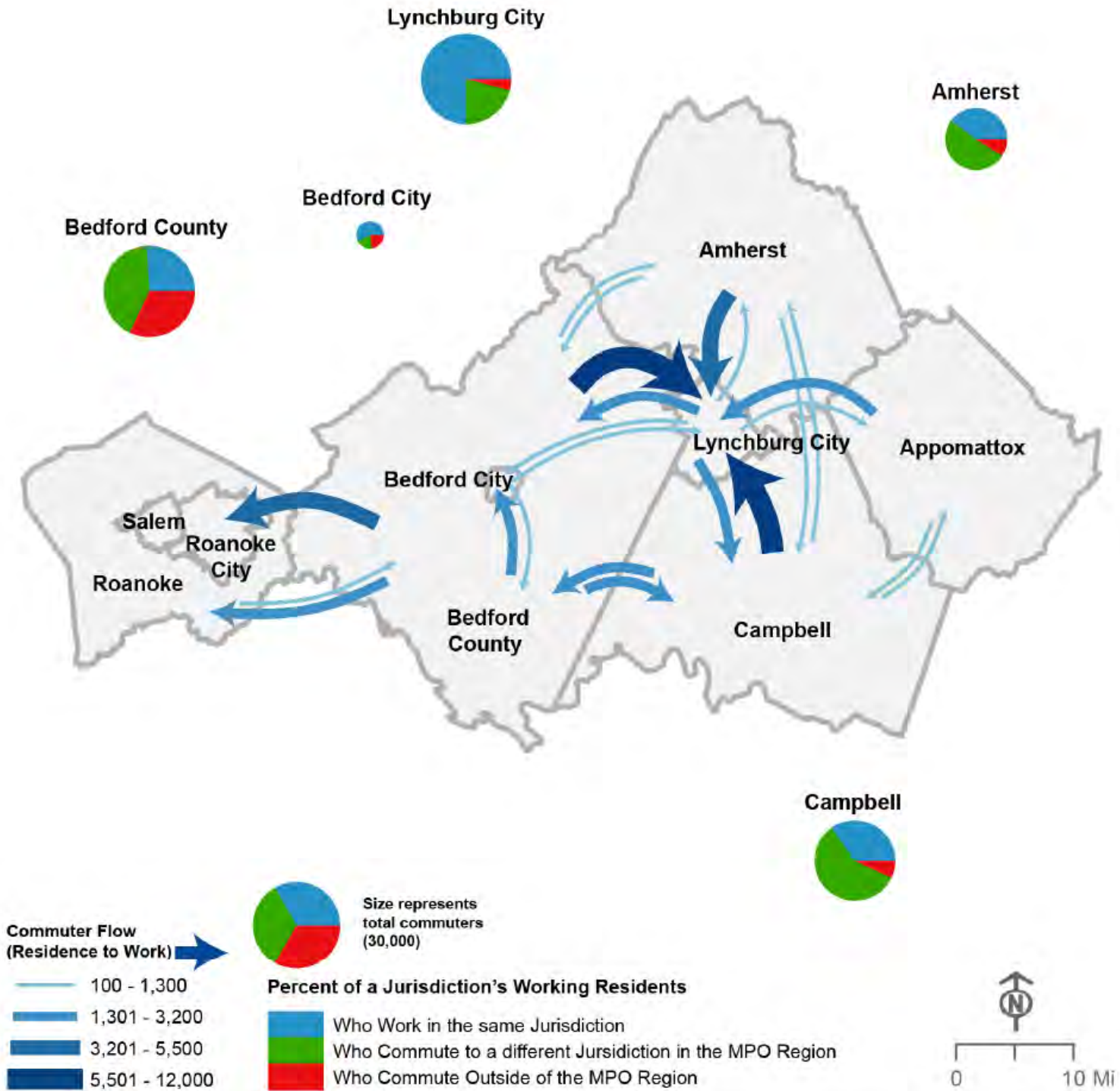


Source: EPA Smart Location database – calculation of diversity of housing and employment land uses

**17 of 26 - June 11, 2015 - TTC Agenda**

CVMPO Data for May, 2015 Regional Forum - Renaissance Planning Group - DRAFT 6/1/15

# Central Virginia Region Transportation Profile



Source: American Community Survey, Census Transportation Planning Products (CTPP) 2013 5-year ACS data (2009-2013). Table number B08303

**18 of 26 - June 11, 2015 - TTC Agenda**

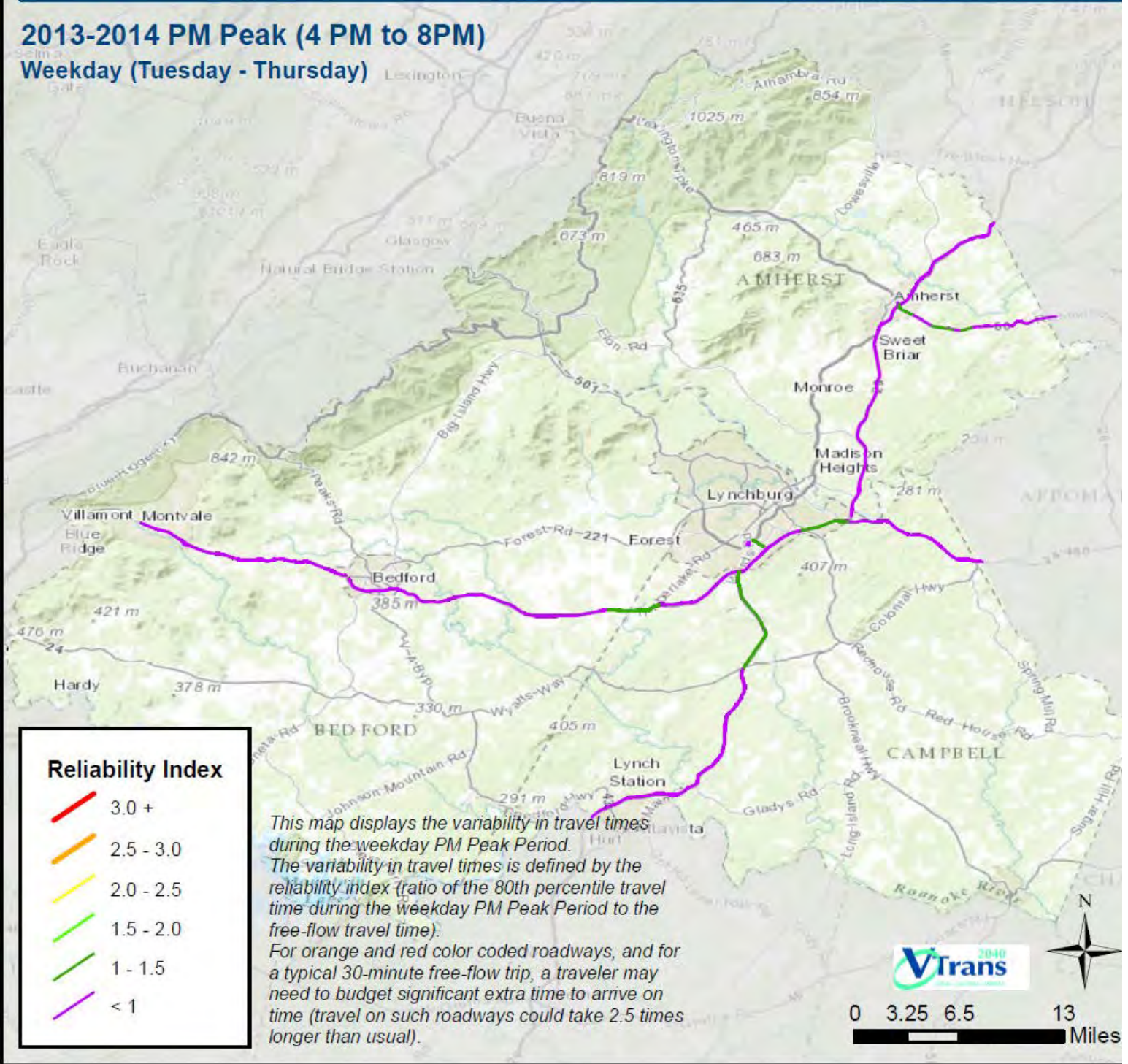
CVMPO Data for May, 2015 Regional Forum - Renaissance Planning Group - DRAFT 6/1/15



# Central Virginia Region Transportation Profile

## Reliability Index: Lynchburg MPO

2013-2014 PM Peak (4 PM to 8PM)  
Weekday (Tuesday - Thursday)



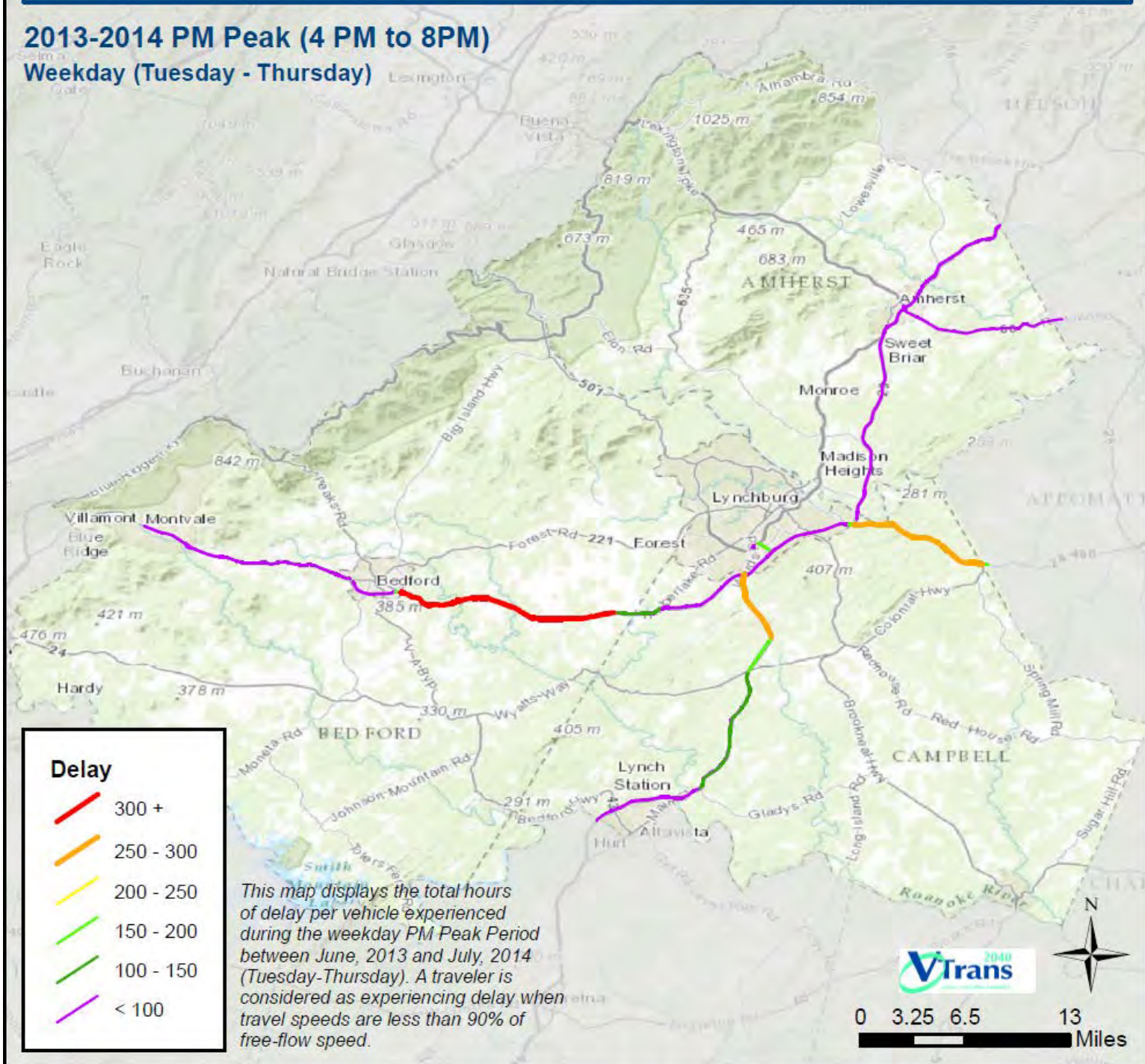
Source: FHWA HERE data of travel speeds



# Central Virginia Region Transportation Profile

## Delay: Lynchburg MPO

**2013-2014 PM Peak (4 PM to 8PM)  
Weekday (Tuesday - Thursday)**



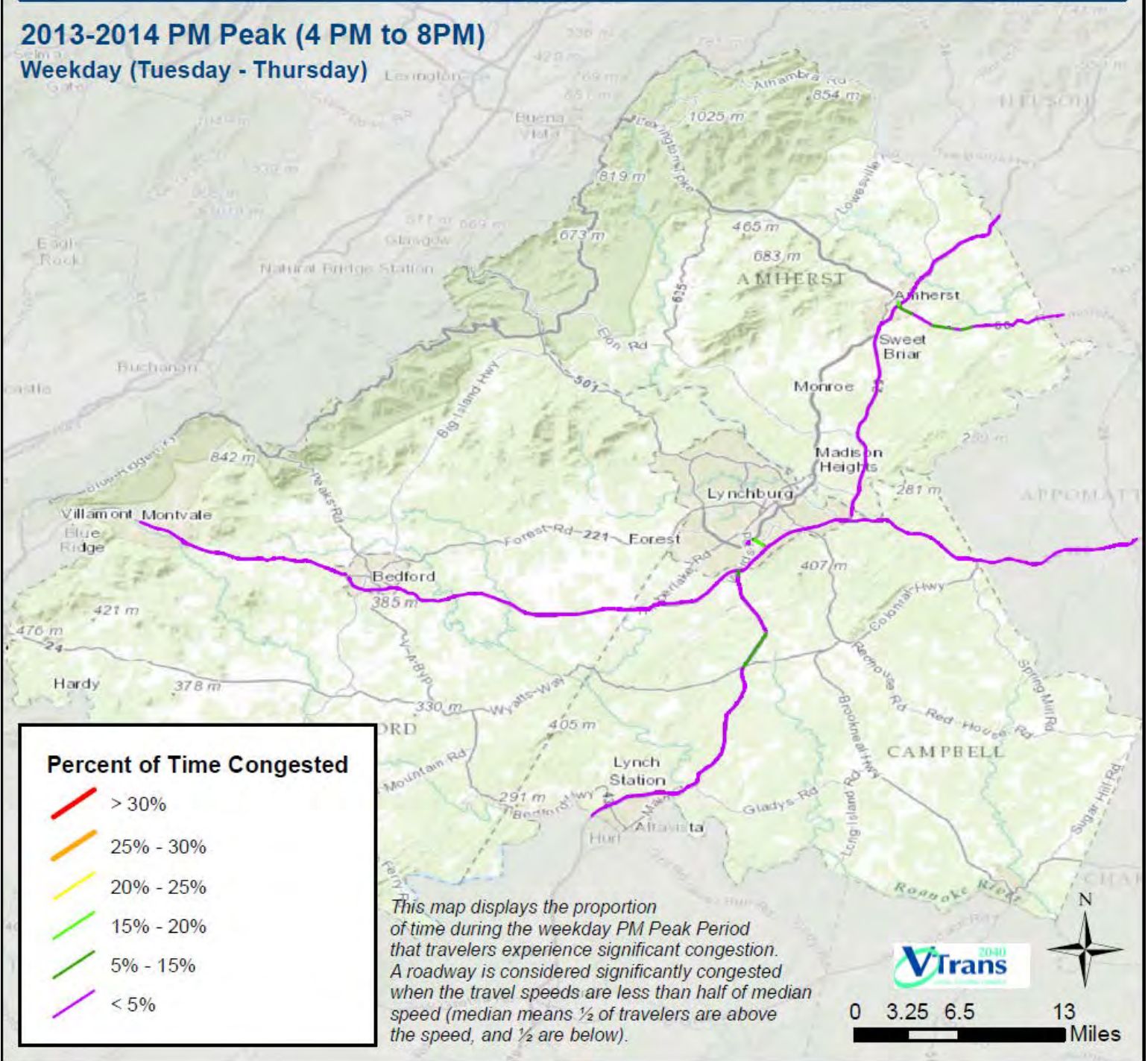
Source: FHWA HERE data of travel speeds



# Central Virginia Region Transportation Profile

## Percent of Time Congested: Lynchburg MPO

2013-2014 PM Peak (4 PM to 8PM)  
Weekday (Tuesday - Thursday)



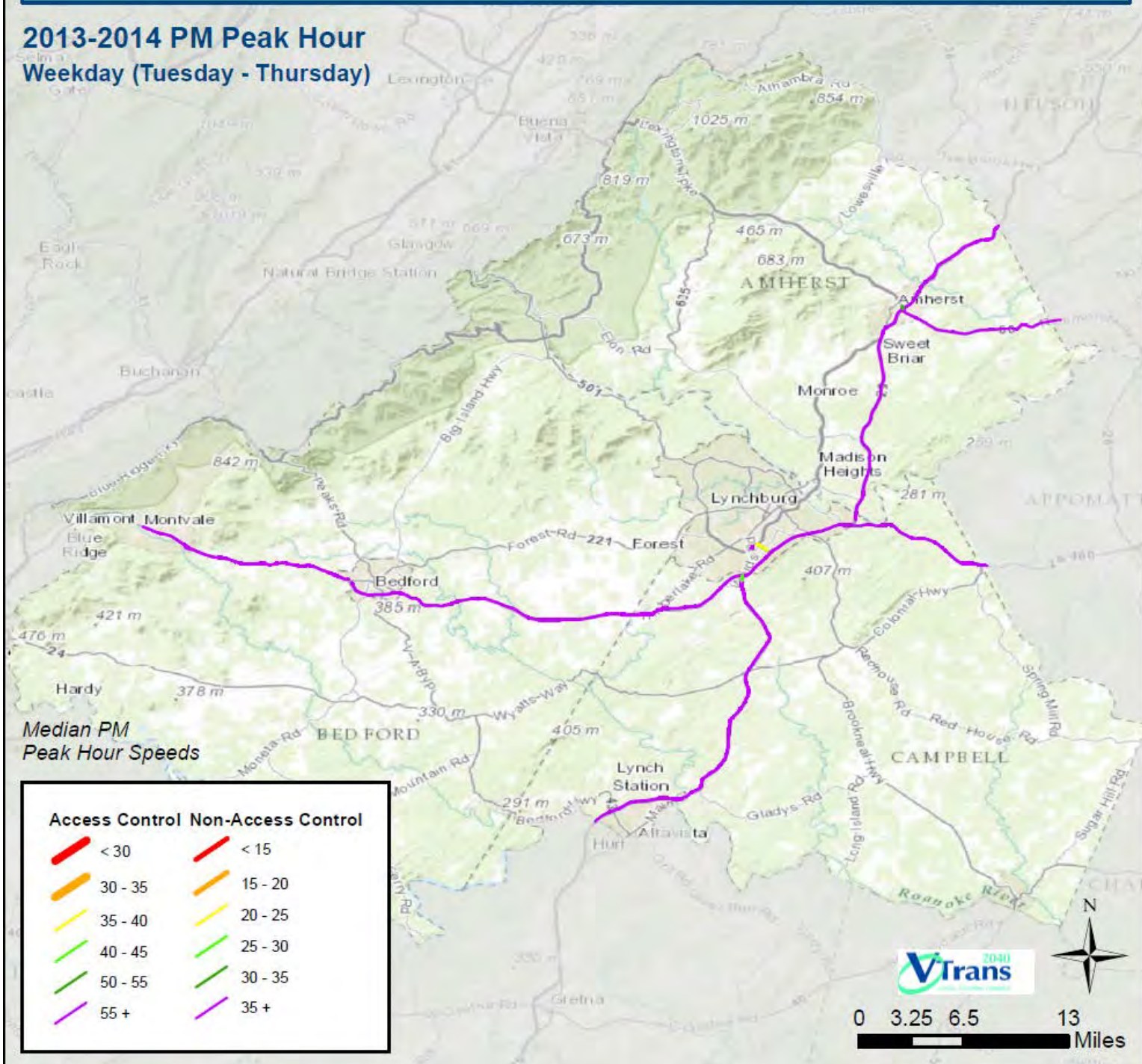
Source: FHWA HERE data of travel speeds



# Central Virginia Region Transportation Profile

## Median Speeds: Lynchburg MPO

2013-2014 PM Peak Hour  
Weekday (Tuesday - Thursday)



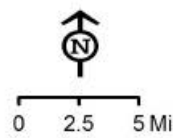
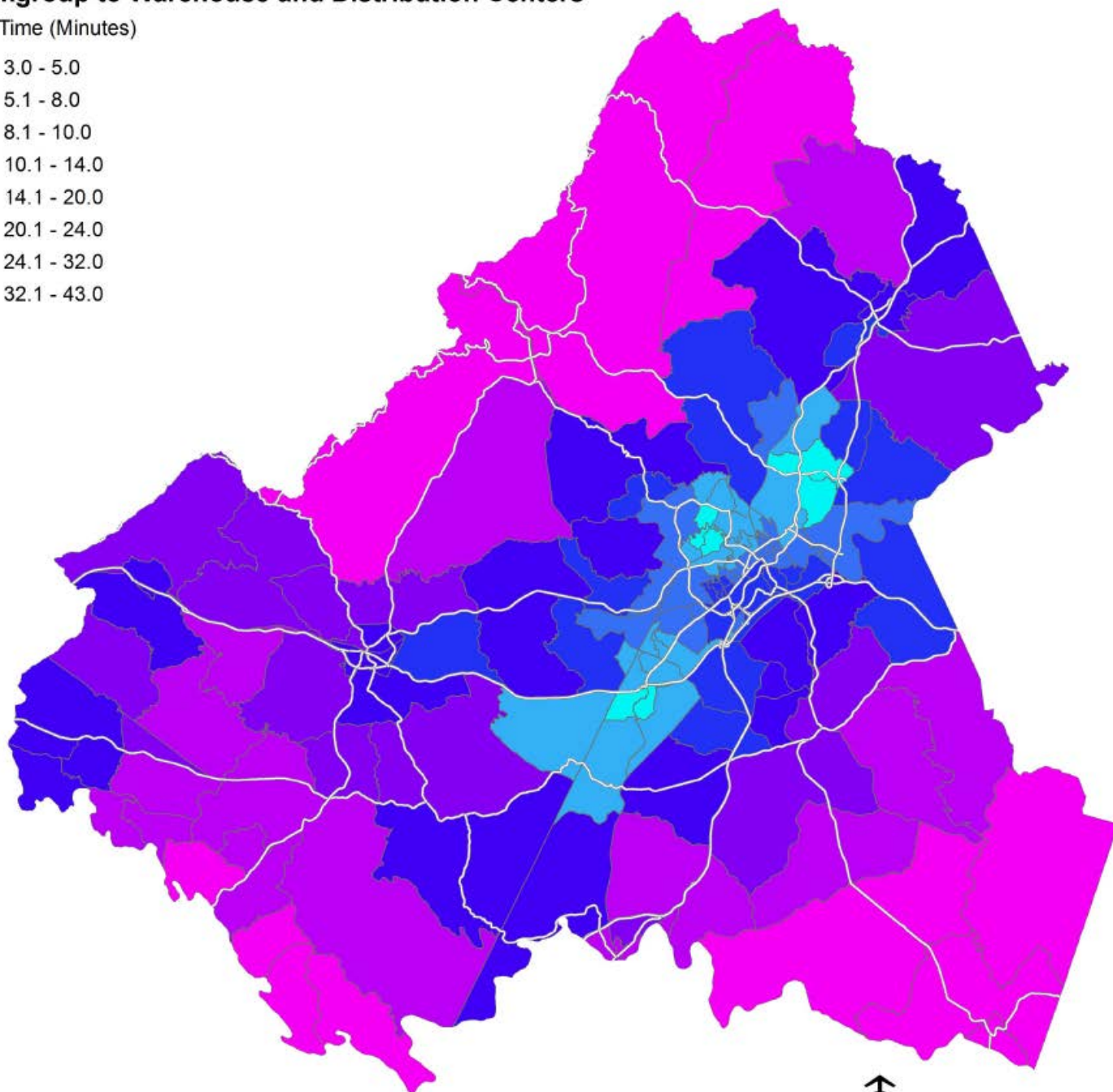
Source: FHWA HERE data of travel speeds

# Central Virginia Region Transportation Profile

## Lynchburg Region

### Blockgroup to Warehouse and Distribution Centers

Drive Time (Minutes)



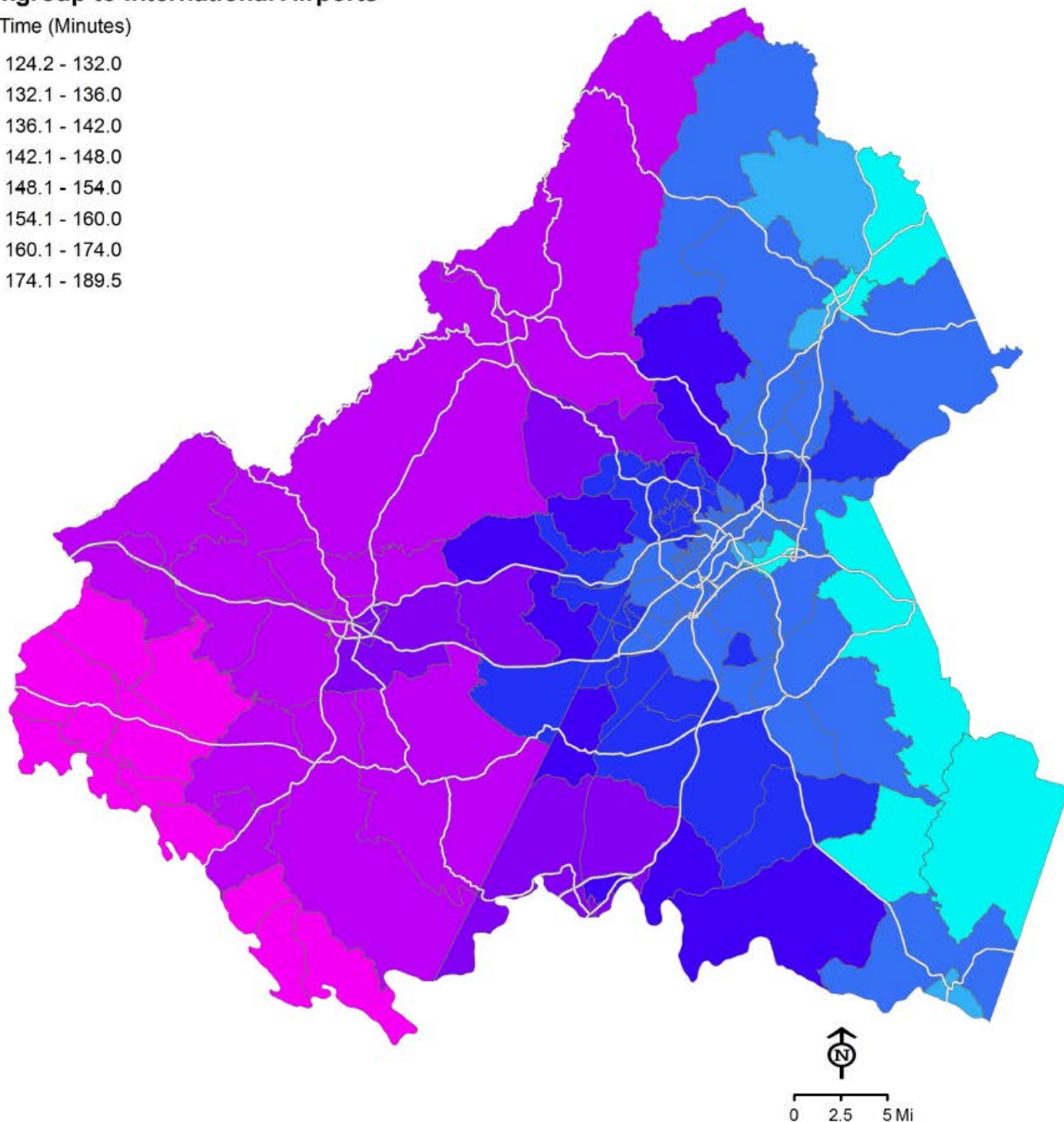
Source: Travel Time calculated from FHWA HERE data; Distribution Centers from OIPI database



# Central Virginia Region Transportation Profile

## Lynchburg Region Blockgroup to International Airports

Drive Time (Minutes)



Source: Travel Time calculated from FHWA HERE data;

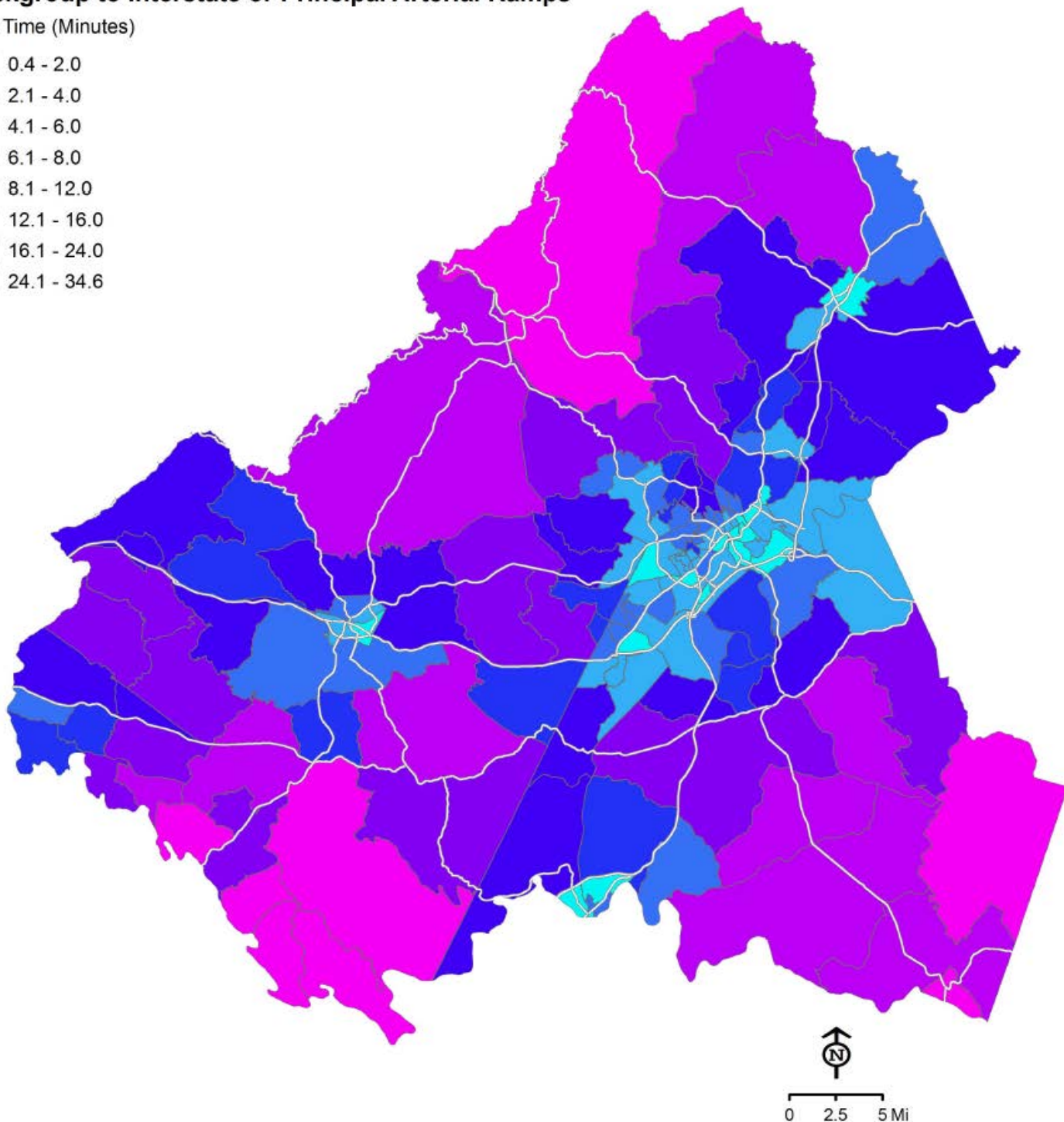


# Central Virginia Region Transportation Profile

## Lynchburg Region

### Blockgroup to Interstate or Principal Arterial Ramps

Drive Time (Minutes)



Source: Travel Time calculated from FHWA HERE data; Ramps from Navteq database

STATEMENT OF PURPOSE  
Approved September 5, 2002

The Central Virginia Transportation Technical Committee (Committee) is responsible for supporting the Central Virginia Metropolitan Planning Organization's (CVMPO) and Region 2000 Regional Commission's transportation policy decision-making efforts.

The Committee provides technical advice in coordinating the federally-mandated "3-C" or continuing, comprehensive, and cooperative, transportation planning and programming process.

The Committee's three principal work efforts are updating the long range transportation plan, updating the transportation improvement program (TIP), and developing the annual unified planning work program. The Committee, in conjunction with its rural colleagues, also develops the annual Rural Transportation Planning Assistance Program Scope of Work. The Committee's intent is to review and comment on TIP projects and work program products.

The Committee acknowledges that the long range transportation plan update is the primary planning document for transportation issues in the Central Virginia region. This planning initiative drives the formulation of the transportation improvement program, as well as the annual work programs.

The Committee further realizes that the long range transportation planning process must identify regional priorities in order to fully influence project funding decisions ultimately exercised by the Commonwealth Transportation Board. The Committee's intent is to recommend priorities and encourage the CVMPO to set these priorities at the regional level.

Because of its importance, the Committee is fully committed to actively being involved in the long range transportation planning process.

In carrying out its responsibilities, the Committee will:

1. Coordinate with local planning departments to ensure an understanding of pertinent local development issues and their impact on the region;
2. Coordinate with nearby MPOs and develop an ongoing dialogue with them;
3. Strive to integrate land use and economic development, as well as transportation considerations, in its planning process;
4. Strive to be proactive as opposed to reactive in problem solving.