

Village Highway Rt 24/US 501

CORRIDOR IMPROVEMENT
STUDY

VILLAGE OF RUSTBURG

FUTURE IMPROVEMENT
ALTERNATIVES



Improvement Alternatives

Brookneal Highway and Colonial Highway

Intersection modification results in a more “standard” intersection, decreases speed for the right turn movement, and puts all turns into a single traffic signal location.

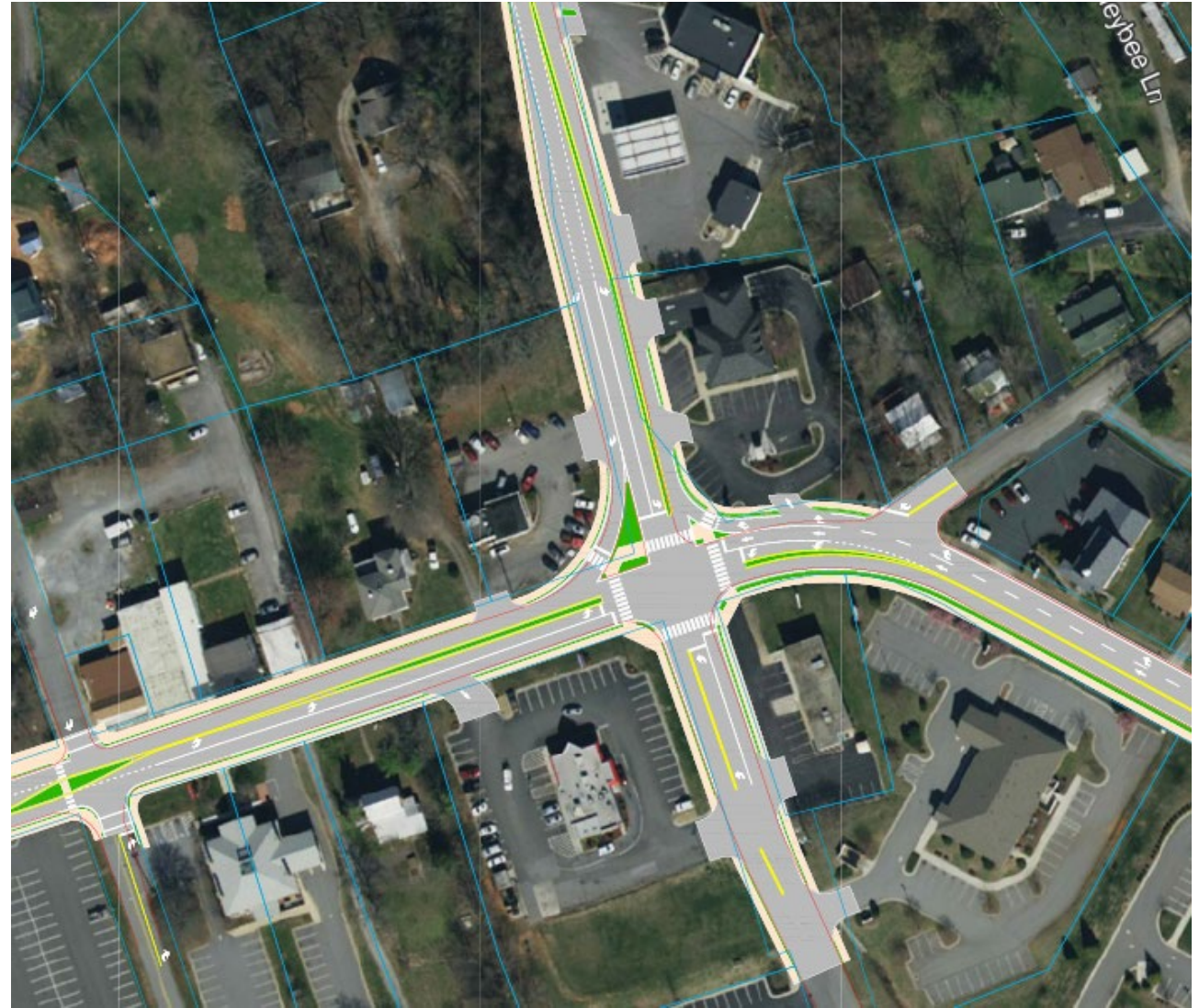
Additional warning lights, rumble strips, and signage would also be provided for traffic approaching from Brookneal.



Improvement Alternatives

Campbell Highway Intersection Improvements

Additional southbound through lane allows for more efficient traffic signal operation. Longer westbound right turn lane better accommodates the high number of turning vehicles. Together the modifications significantly reduce queues (back-ups). Pedestrian count down signal heads and crosswalks improve safety. Traffic islands will impact access to businesses but also improve safety.



Improvement Alternatives

Campbell Highway Roundabout

Roundabout minimizes wait times and queues (back-ups) but significantly impacts adjacent businesses. Roundabouts are safer intersection configurations, and slow vehicles to less than 15 mph, however due to the heavy truck volumes the space required is large.



Improvement Alternatives

Mountain Lane Connections

The Mountain Lane intersection is within the area where cars queue and sight distance is challenging. A new median will prohibit the left turns into and out of Mountain Lane. If this occurs, there could be a need to build a connector road over to Honeybee Lane. Exact location would require more study and public input.



Improvement Alternatives

Food Lion Driveway

Near the eastern shopping center entrance turn lanes from Village Highway overlap, resulting in car accidents. Moving the entrance to the west relieves the overlap of the turn lanes and improves safety.



Improvement Alternatives

Red House Road

An eastbound right turn lane is warranted which impacts access to the store. To alleviate this impact a new access could be created to the back of the store. Pedestrian count down signal heads and crosswalks improve safety.



Improvement Alternatives

Red House Road

Shifting Red House Road to the east to line up with the driveway on the north results in an improved access configuration. This includes a new eastbound right turn lane and modified access to the store.



Improvement Alternatives

Mid-Block Pedestrian Crossing

Adding a raised median feature on the east side of the crossing(s) provides a pedestrian refuge and improve safety for pedestrians crossing Village Highway.



Improvement Alternatives

Shared Use Path

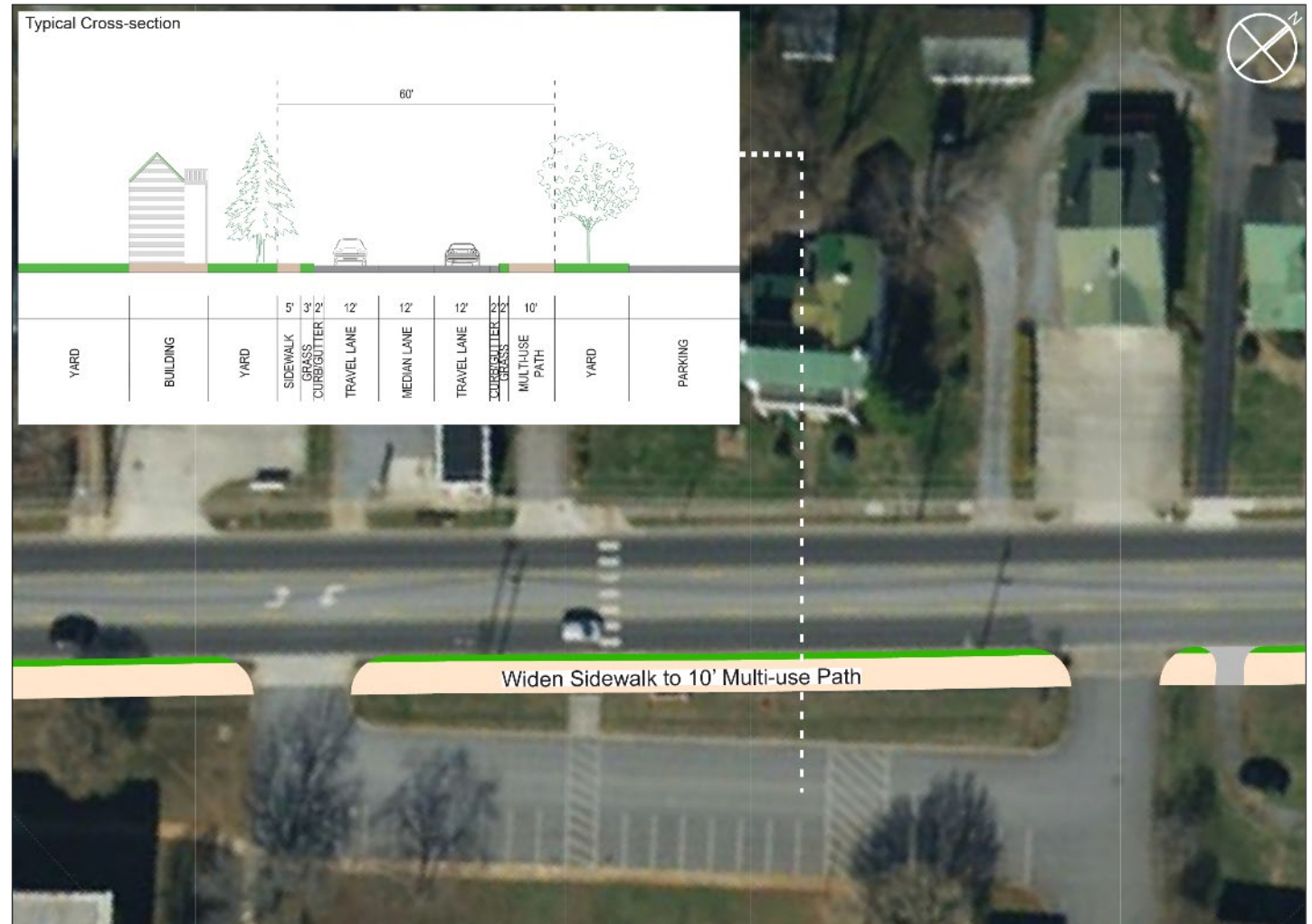
Widening the sidewalk along Village Hwy by 5', resulting in a 10' wide multiuse path for bicycles and pedestrians, improves safety for non-motorists. The path would extend from the elementary school to the Red House Road intersection. The project could be built in phases.



Improvement Alternatives

Shared Use Path

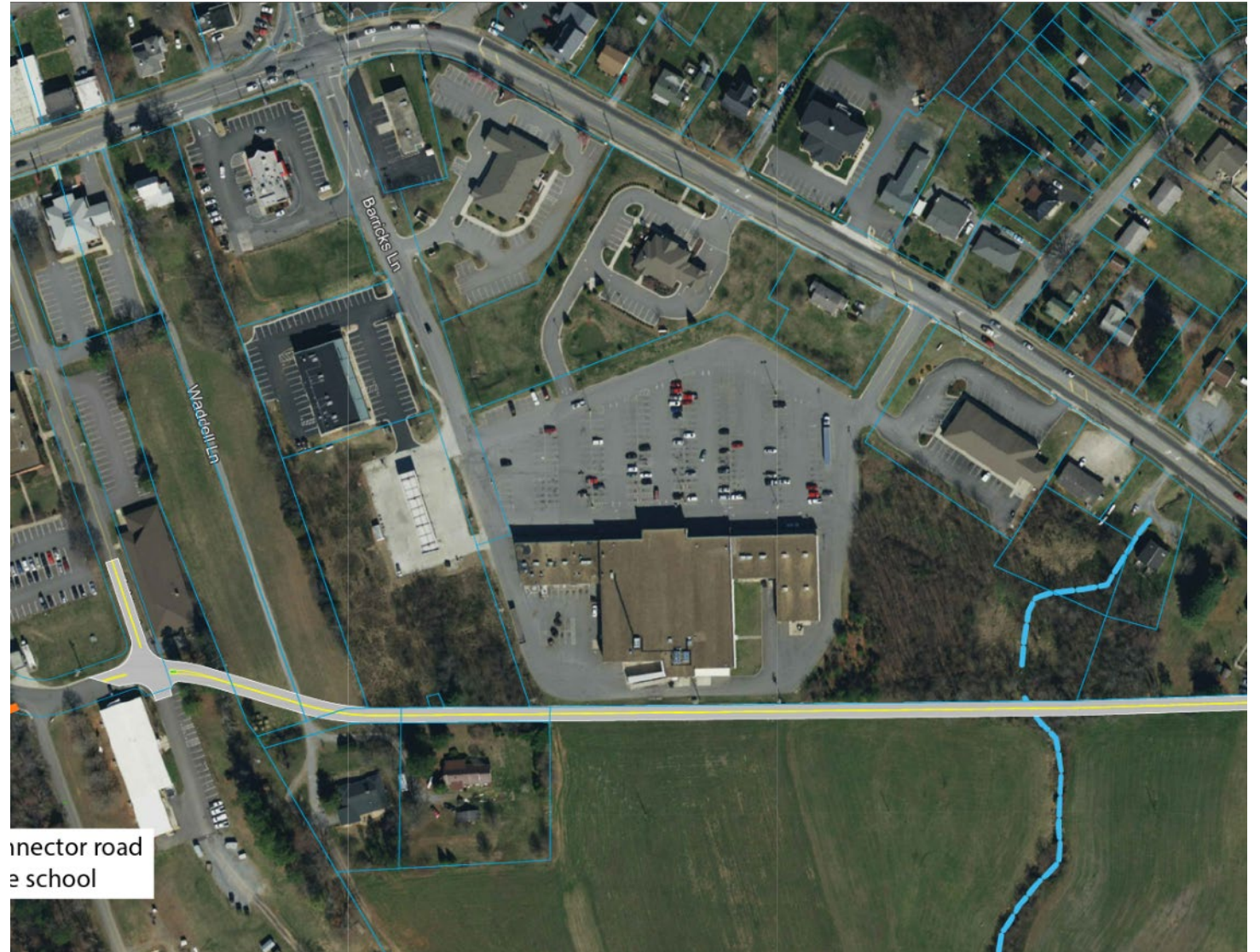
Widening the sidewalk along Village Hwy by 5', resulting in a 10' wide multiuse path for bicycles and pedestrians, improves safety for non-motorists. The path would extend from the elementary school to the Red House Road intersection. The project could be built in phases.



Improvement Alternatives

New Roadway

New road between Carden Lane and Babcock Road provides a parallel route to Village Highway, from Rocky Road near the middle school to the west side of town.



Improvement Alternatives

Street Scape

Improve the appearance of Village Highway by adding color and texture to the sidewalk and crosswalks. Widen the sidewalks, add street trees, and underground the utilities as funding allows.

