

Ambassador Drive Intersection

- Raised concrete islands are added.
- Left turns from Ambassador Drive on to Route 221 are prohibited.
- Left turns from the Walmart entrance on to Route 221 are prohibited.
- Sidewalks are added.

Cloverhill Boulevard Intersection

- The intersection is modified to a thru-cut intersection.
- Drivers must turn left or right from Cloverhill Boulevard. Through travel across Route 221 is prohibited.
- Sidewalks are added.

Newcomb Boulevard Intersection

- Raised concrete islands are added.
- Left turns from Newcomb Boulevard on to Route 221 are prohibited.
- Left turns from the Walmart entrance on to Route 221 are prohibited.
- Sidewalks are added.

LEGEND

	PROP. FULL DEPTH PAVEMENT
	PROP. MILL AND OVERLAY
	PROP. CONCRETE ISLAND
	PROP. SIDEWALK
	PROP. ADA RAMP
	PROP. GRASS AREA
	EXISTING PARCEL BOUNDARY/ROW
	EXISTING EDGE OF PAVEMENT
	EXISTING CURB AND GUTTER (CG-6)
	PROP. CURB AND GUTTER (CG-6)
	PROP. CURB (CG-2)
	EXISTING SIGNALIZED INTERSECTION WITH PROPOSED MODIFICATIONS
	IMPACTED SIGN/UTILITY STRUCTURE
	PROP. CURB AND GUTTER
	PROP. ADA RAMP
	PROP. 5' WIDE SIDEWALK

LEGEND

PROP. FULL DEPTH PAVEMENT

PROP. MILL AND OVERLAY

01

01

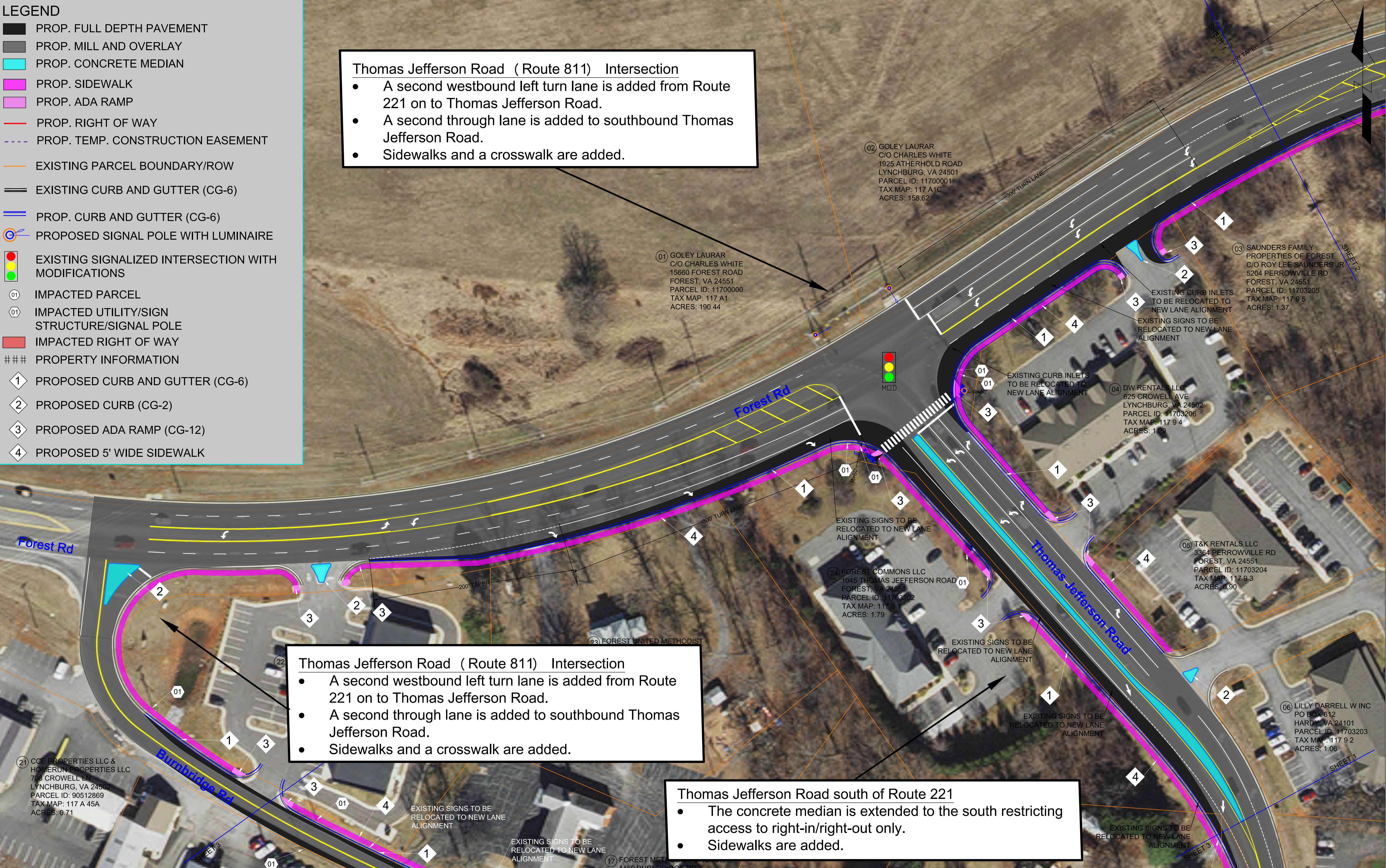
###

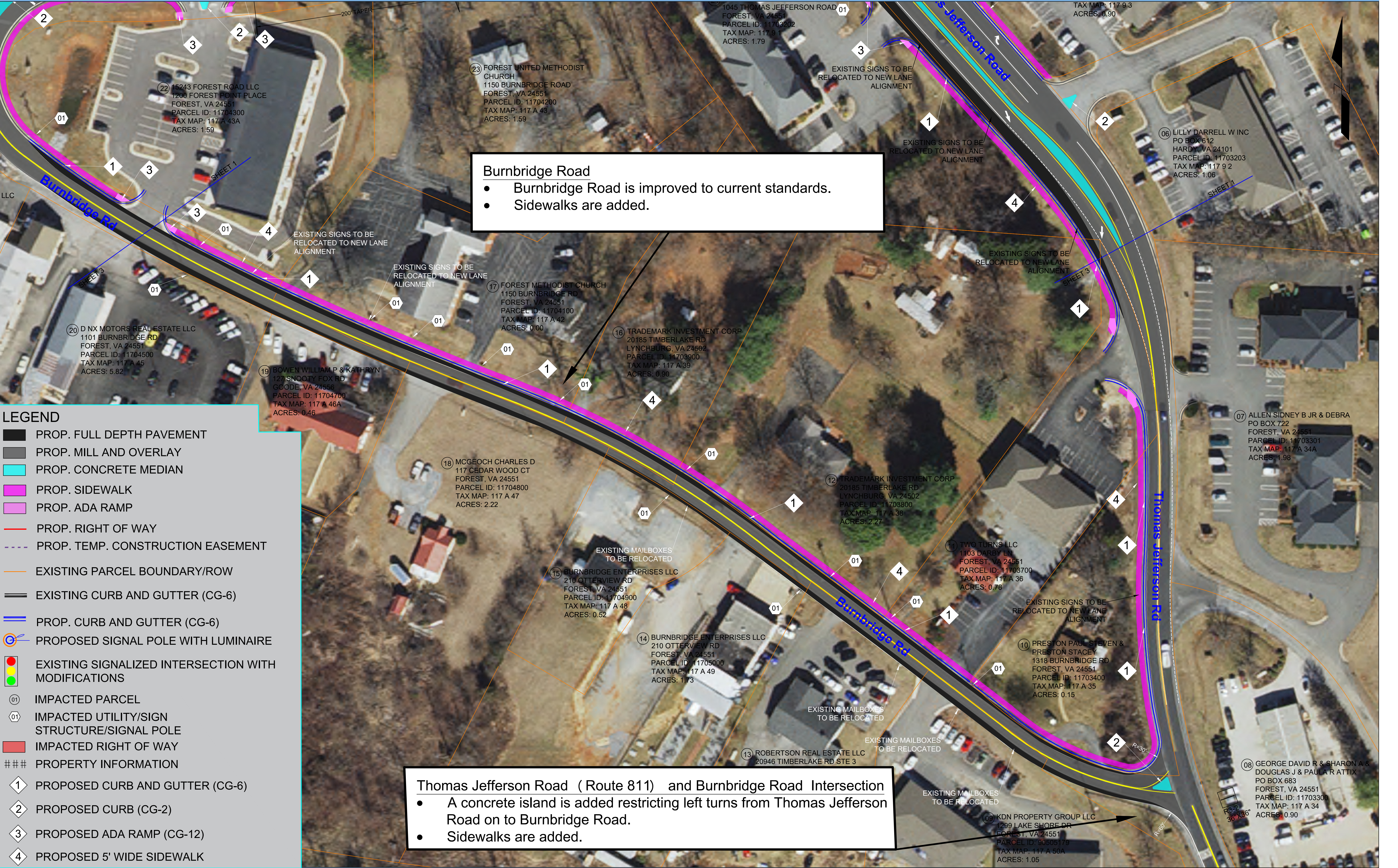
1

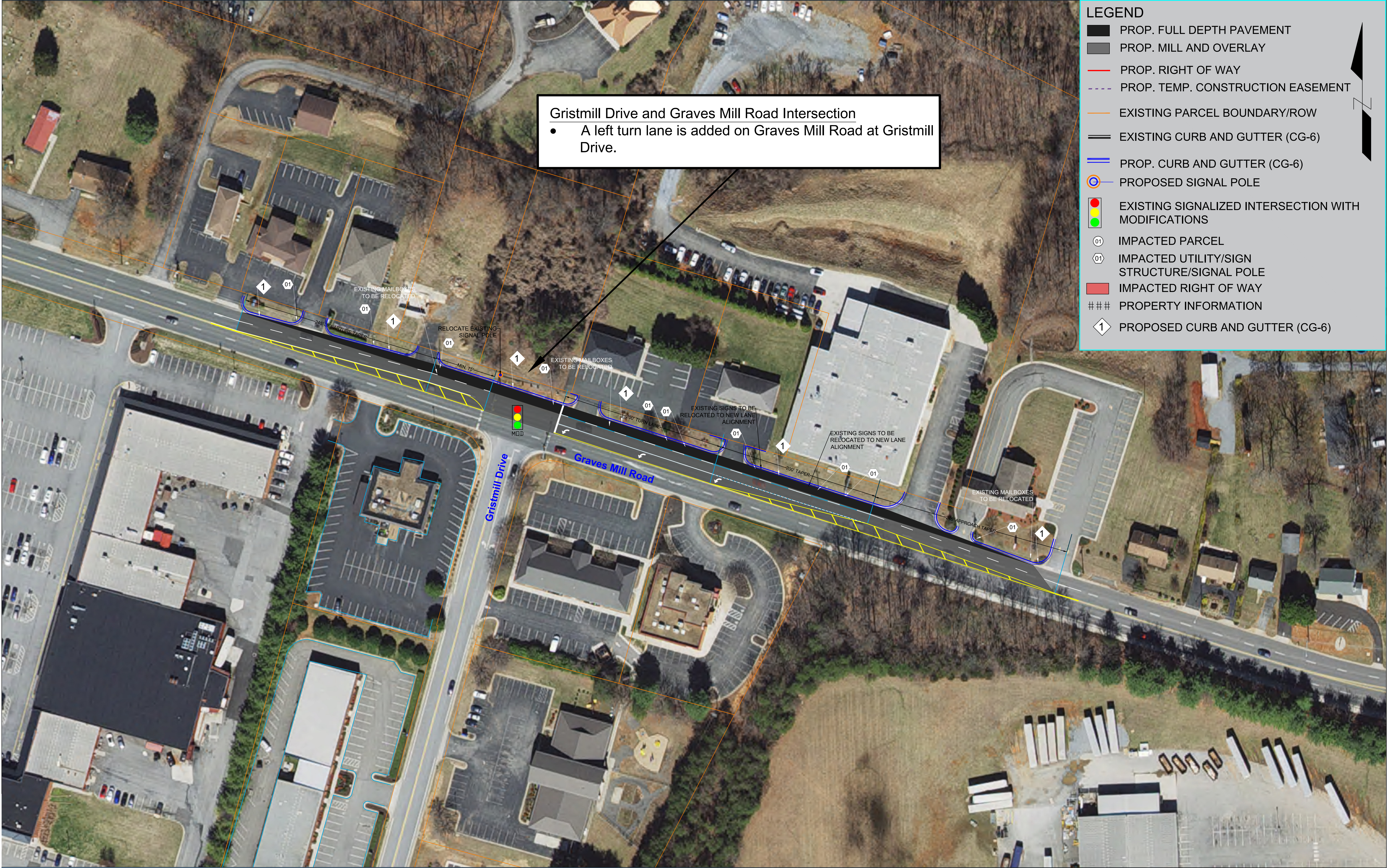
2

3

4

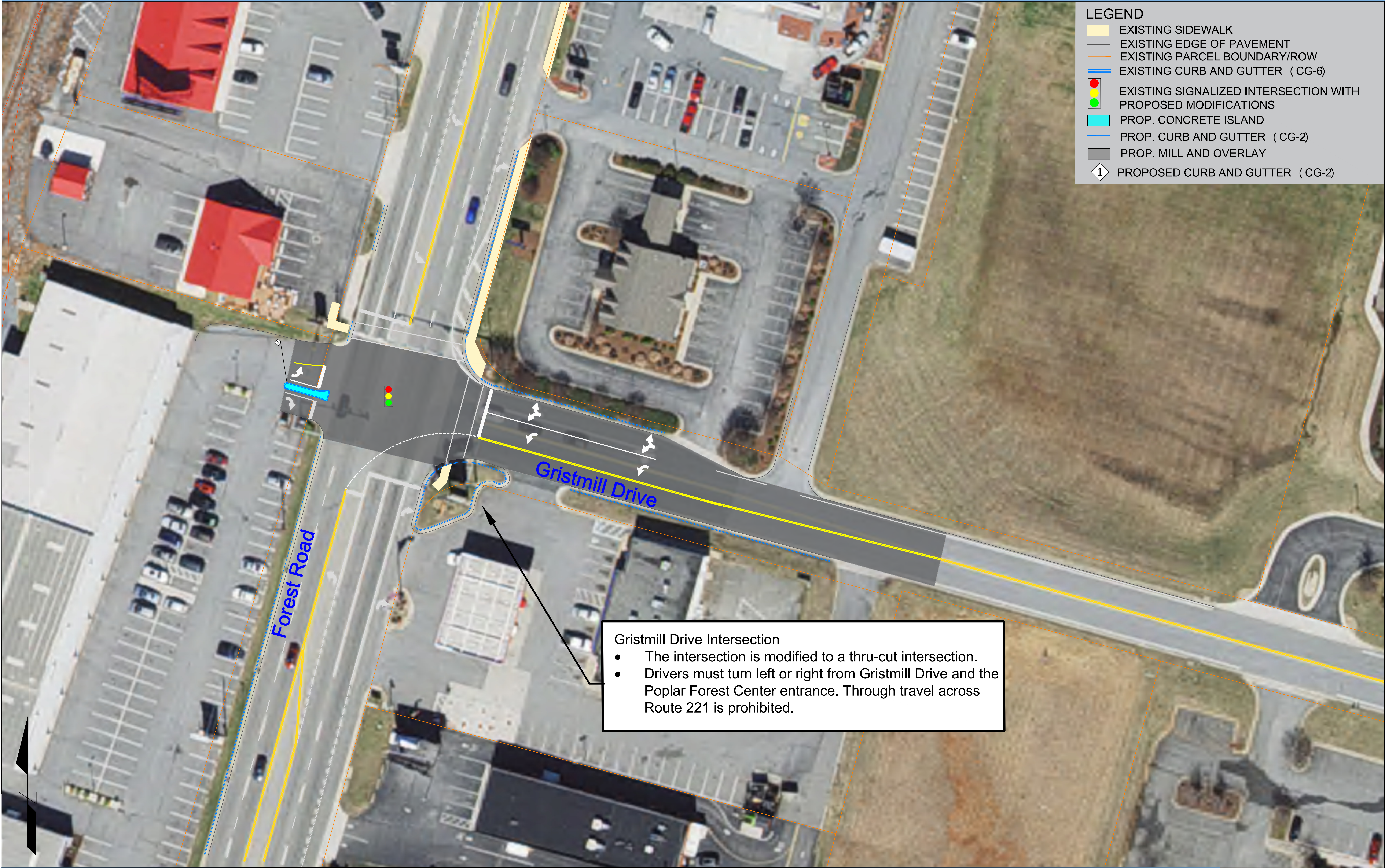


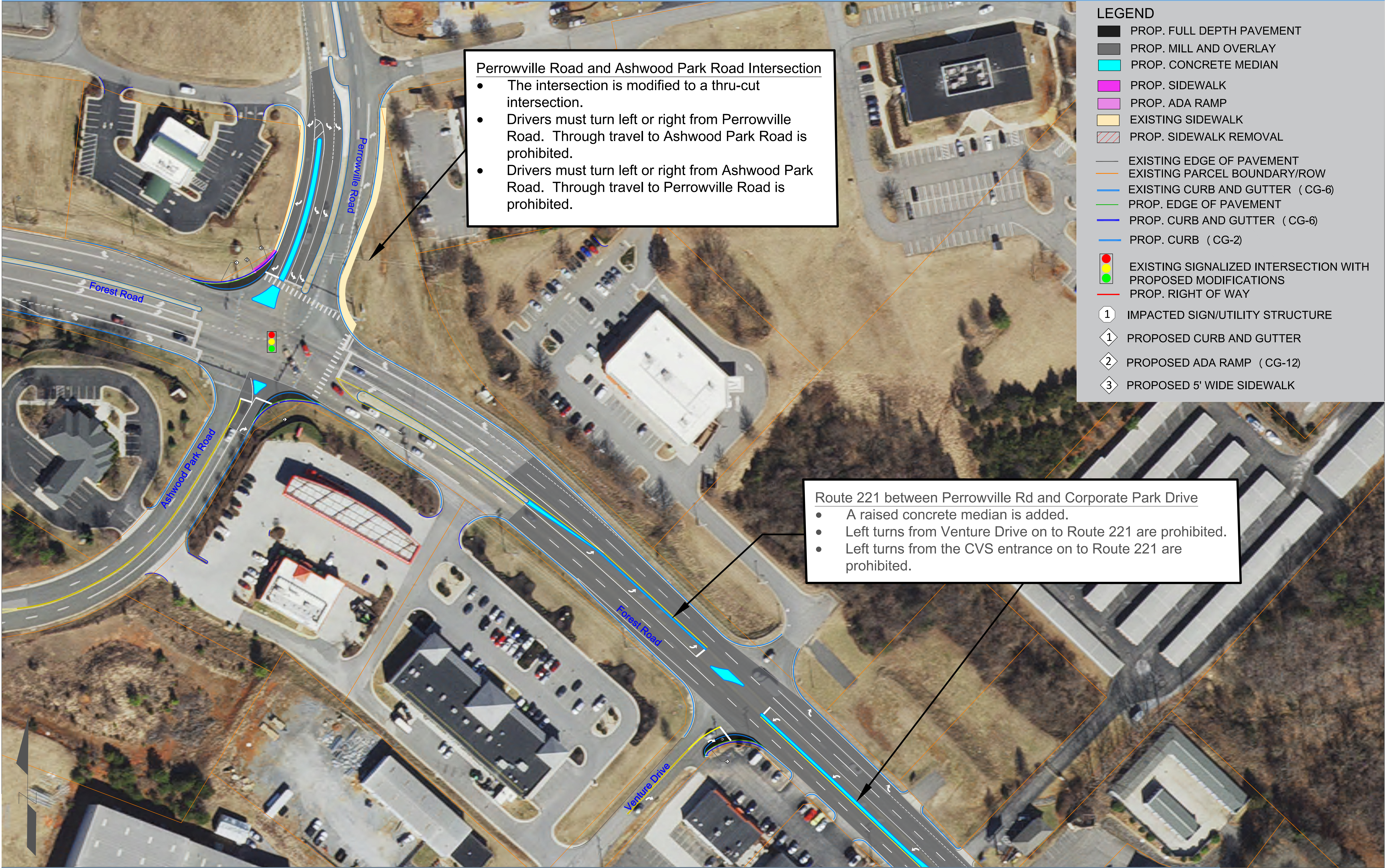


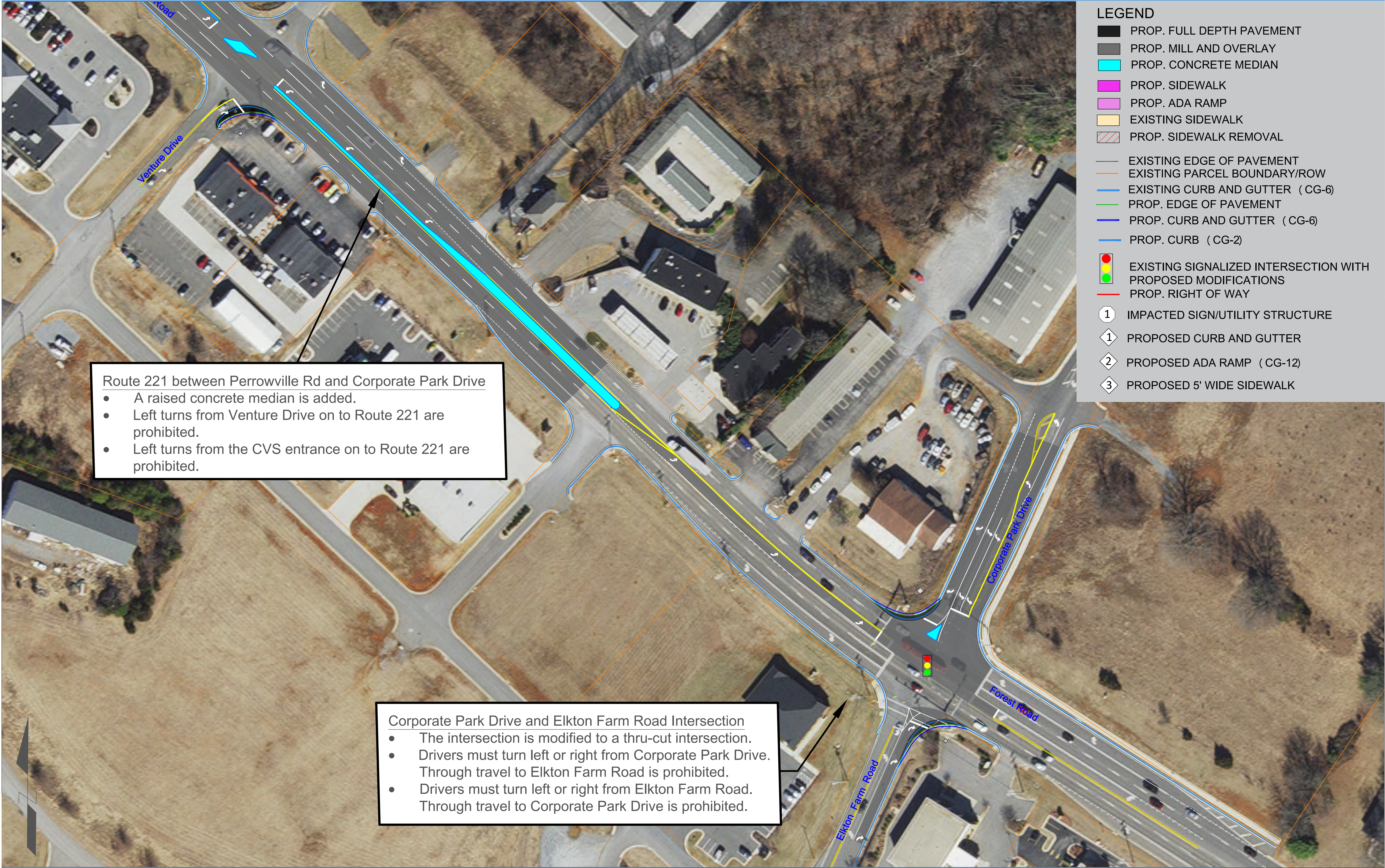












LEGEND

- PROP. FULL DEPTH PAVEMENT
- PROP. MILL AND OVERLAY
- PROP. CONCRETE MEDIAN
- PROP. SIDEWALK
- PROP. ADA RAMP
- EXISTING SIDEWALK
- PROP. SIDEWALK REMOVAL
- EXISTING EDGE OF PAVEMENT
- EXISTING PARCEL BOUNDARY/ROW
- EXISTING CURB AND GUTTER (CG-6)
- PROP. EDGE OF PAVEMENT
- PROP. CURB AND GUTTER (CG-6)
- PROP. CURB (CG-2)
- EXISTING SIGNALIZED INTERSECTION WITH PROPOSED MODIFICATIONS
- PROP. RIGHT OF WAY
- 1 IMPACTED SIGN/UTILITY STRUCTURE
- 1 PROPOSED CURB AND GUTTER
- 2 PROPOSED ADA RAMP (CG-12)
- 3 PROPOSED 5' WIDE SIDEWALK

Route 221 between Perrowville Rd and Corporate Park Drive

- A raised concrete median is added.
- Left turns from Venture Drive on to Route 221 are prohibited.
- Left turns from the CVS entrance on to Route 221 are prohibited.

Corporate Park Drive and Elkton Farm Road Intersection

- The intersection is modified to a thru-cut intersection.
- Drivers must turn left or right from Corporate Park Drive. Through travel to Elkton Farm Road is prohibited.
- Drivers must turn left or right from Elkton Farm Road. Through travel to Corporate Park Drive is prohibited.